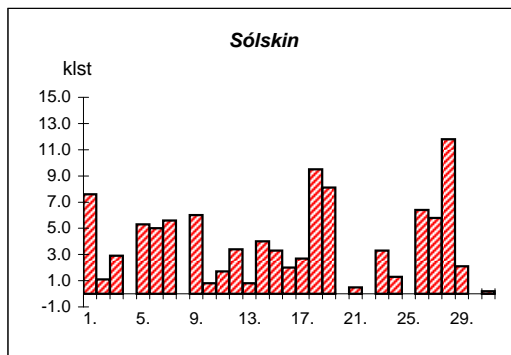
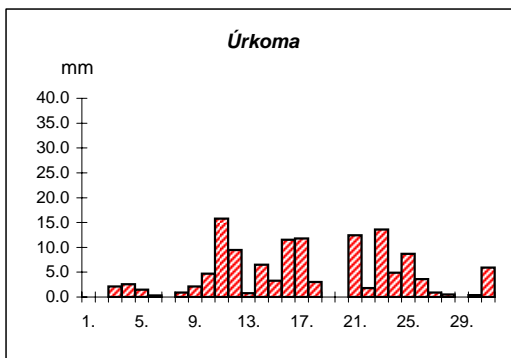
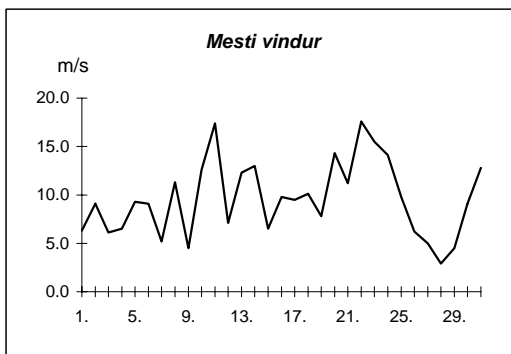
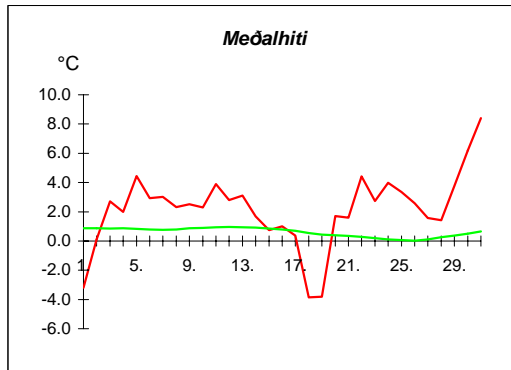


Reykjavík mars 2007

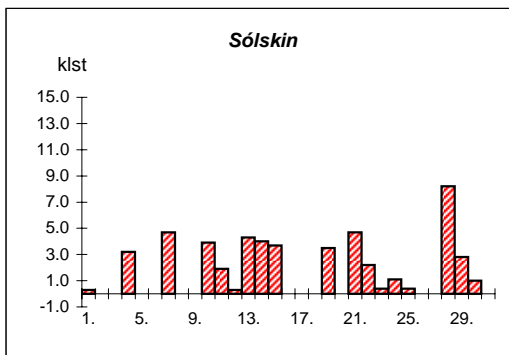
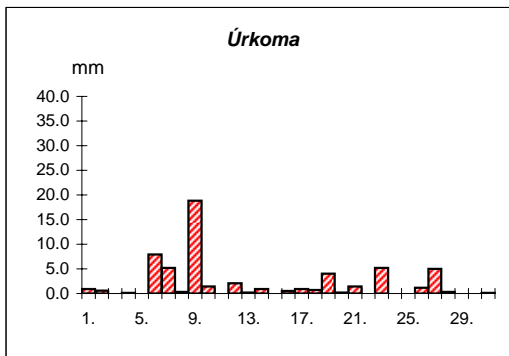
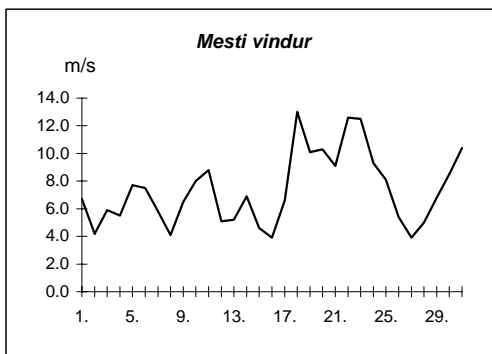
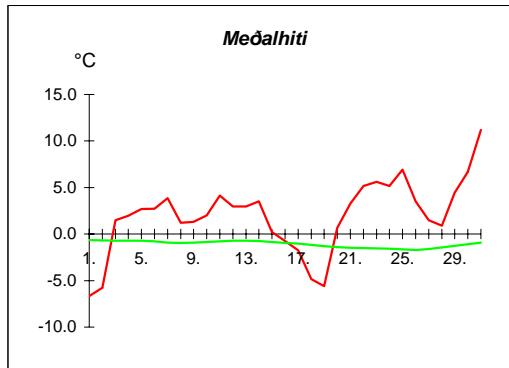
Dags	Meðalhiti (°C)	Hámark (°C)	Lágmark (°C)	Úrkoma (mm)	Úrkomutegund	Snjóþýpt (cm)	Snjóhula (0-4)	Sólskin(klst)	Meðalvindur (m/s)	Mesti vindur (m/s)	Hviða (m/s)
1.	-3.2	-0.3	-6.9					7.6	3.1	6.3	10.0
2.	0.1	2.4	-3.1	0.0	sn			1.1	6.6	9.1	16.3
3.	2.7	5.5	0.8	2.1	ri			2.9	2.9	6.1	10.0
4.	2.0	3.9	-0.7	2.6	ri			0.0	3.6	6.5	11.6
5.	4.5	6.6	3.1	1.5	ri			5.3	5.3	9.3	15.4
6.	2.9	7.7	-1.0	0.3	ri			5.0	2.8	9.1	14.8
7.	3.0	6.2	0.5	0.0	ri			5.6	2.8	5.2	7.8
8.	2.3	5.8	1.3	0.9	sl			0.0	4.2	11.3	17.9
9.	2.5	5.5	1.6	2.1	ri			6.0	2.5	4.5	6.8
10.	2.3	3.6	0.1	4.7	sl		2	0.8	7.4	12.6	20.9
11.	3.9	5.7	0.4	15.8	sl			1.7	8.9	17.4	28.3
12.	2.8	5.4	2.2	9.5	ri			3.4	3.0	7.1	11.7
13.	3.1	4.7	0.0	0.8	sl		2	0.8	5.5	12.3	17.6
14.	1.7	7.1	0.6	6.5	sl		2	4.0	6.8	13.0	21.2
15.	0.8	3.4	-1.9	3.3	sn	6	4	3.3	2.6	6.5	12.5
16.	1.0	3.2	0.0	11.5	sn	7	4	2.0	3.2	9.8	15.3
17.	0.4	2.4	-0.4	11.8	sn	11	4	2.7	4.6	9.5	16.3
18.	-3.9	1.3	-4.8	3.0	sn	13	4	9.5	7.1	10.1	16.9
19.	-3.8	-1.6	-5.4	0.0	ri	12	4	8.1	3.6	7.8	12.3
20.	1.7	6.4	-4.4			13	4	0.0	5.9	14.3	22.3
21.	1.6	6.2	-0.6	12.4	sl		2	0.5	7.3	11.2	17.5
22.	4.4	6.5	-0.7	1.8	sl	6	4	0.0	10.8	17.6	26.9
23.	2.7	8.2	0.6	13.6	sl			3.3	6.2	15.5	23.2
24.	4.0	7.2	0.5	4.9	sl		2	1.3	9.4	14.1	23.2
25.	3.3	6.4	1.5	8.7	ri			0.0	4.8	9.8	16.7
26.	2.6	5.7	2.0	3.6	sl			6.4	2.7	6.2	9.0
27.	1.6	5.2	-0.2	0.9	sn		2	5.8	2.4	5.0	7.6
28.	1.4	4.3	-2.8	0.5	sn		2	11.8	1.4	2.9	4.7
29.	3.8	6.0	1.6	0.0	ri			2.1	2.4	4.5	6.8
30.	6.2	9.0	4.1	0.4	ri			0.0	5.9	9.1	13.9
31.	8.4	10.2	6.3	5.9	ri			0.2	8.8	12.8	18.8

Meðalhiti	=	2.2 °C
Frávik frá meðaltali 1961-90	=	1.7 °C
Meðalhámarkshiti	=	5.2 °C
Meðallágmarkshiti	=	-0.2 °C
Úrkomumagn	=	129.1 mm
Hlutfall úrkomu af meðaltali 1961-90	=	157.4 %
Meðalvindhraði	=	5.0 m/s
Sólskinsstundir	=	101.2 klst

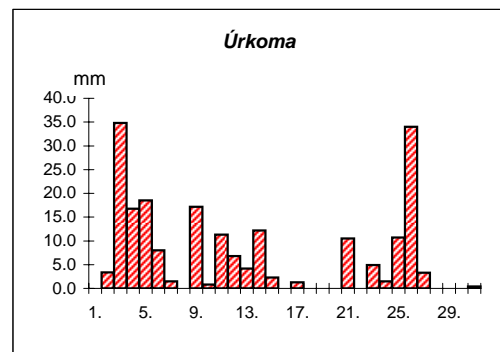
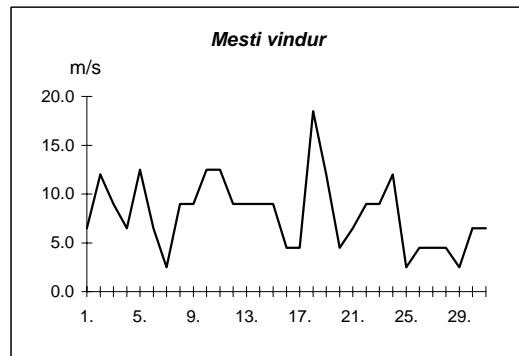
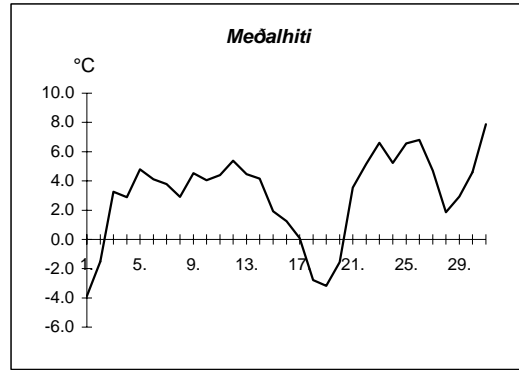


Dags	Meðalhiti (°C)	Hámark (°C)	Lágmark (°C)	Úrkoma (mm)	Úrkomutegund	Sníjóþpt (cm)	Sníjóhula (0-4)	Sólskin(klst)	Meðalvindur (m/s)	Mesti vindur (m/s)	Hviða (m/s)
1.	-6.7	-4.0	-8.1	0.9	sn	20	4	0.3	1.5	6.7	10.3
2.	-5.8	-3.8	-8.7	0.6	sn	22	4	0.0	2.2	4.2	10.0
3.	1.5	4.2	-4.2	0.0	sn	18	4	0.0	2.1	5.9	12.3
4.	2.0	4.2	0.2	0.1	sl	15	4	3.2	2.1	5.5	9.6
5.	2.7	5.0	0.0	0.0	sl	14	4	0.0	2.9	7.7	14.4
6.	2.7	5.5	1.2	7.9	ri		2	0.0	2.9	7.5	12.9
7.	3.9	6.8	1.8	5.2	ri		2	4.7	2.2	5.8	9.7
8.	1.2	3.6	0.1	0.3	ri			0.0	1.7	4.1	6.6
9.	1.3	3.0	0.1	18.8	sl	10	4	0.0	2.0	6.5	11.4
10.	2.0	5.0	0.0	1.4	sl	11	4	3.9	2.4	8.0	12.1
11.	4.2	6.6	0.5	0.0	ri			1.9	4.6	8.8	16.6
12.	3.0	6.0	2.4	2.1	ri		2	0.3	1.7	5.1	8.2
13.	3.0	5.0	1.3	0.2	ri			4.3	2.0	5.2	10.2
14.	3.5	7.4	1.6	0.9	sl			4.0	4.2	6.9	14.2
15.	0.2	3.5	-2.0					3.7	1.8	4.6	8.0
16.	-0.7	1.8	-1.2	0.5	sn	3	4	0.0	2.0	3.9	6.0
17.	-1.8	1.0	-3.1	0.9	sl			0.0	2.3	6.6	14.2
18.	-4.8	-0.2	-5.7	0.7	sn			0.0	7.6	13.0	20.0
19.	-5.6	-2.0	-5.5	4.0	sn		2	3.5	4.2	10.1	15.0
20.	0.7	4.6	-9.3	0.2	ri		2	0.0	5.1	10.3	22.2
21.	3.3	7.5	2.2	1.4	ri		2	4.7	4.8	9.1	18.3
22.	5.2	8.2	0.2	0.0	sn			2.2	7.9	12.6	27.4
23.	5.6	10.0	4.4	5.2	ri			0.4	5.1	12.5	27.1
24.	5.2	9.0	1.5	0.0	ri			1.1	4.7	9.3	20.5
25.	6.9	9.6	3.7	0.0	ri			0.4	4.6	8.1	16.8
26.	3.5	10.5	2.9	1.2	ri			0.0	1.9	5.4	10.5
27.	1.5	3.6	0.8	5.0	sl			0.0	1.4	3.9	5.5
28.	0.9	5.4	-3.0	0.3	ri			8.2	2.0	5.0	9.9
29.	4.4	7.2	1.0					2.8	2.0	6.8	12.0
30.	6.7	9.4	3.0					1.0	4.2	8.5	15.6
31.	11.2	14.1	7.8	0.1	ri			0.0	6.9	10.4	20.5

Meðalhiti	=	2.0 °C
Frávik frá meðaltali 1961-90	=	3.3 °C
Meðalhámarkshiti	=	5.1 °C
Meðallágmarkshiti	=	-0.5 °C
Úrkomumagn	=	57.9 mm
Hlutfall úrkomu af meðaltali 1961-90	=	134.7 %
Meðalvindhraði	=	3.3 m/s
Sólskinsstundir	=	50.6 klst



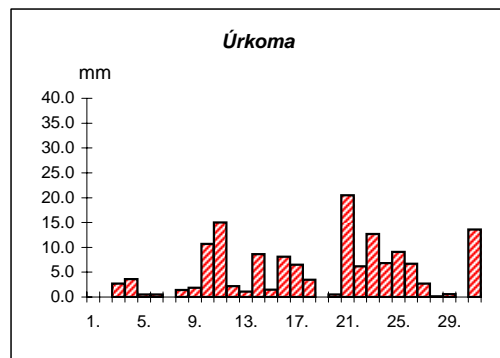
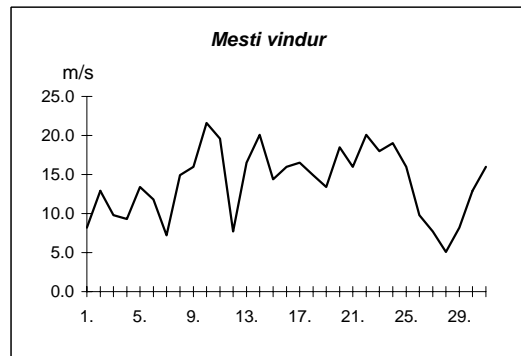
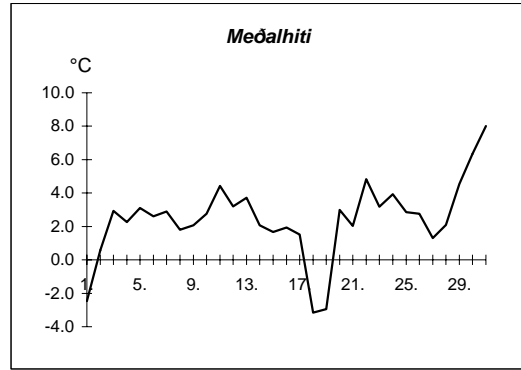
Dags	Meðalhiti (°C)	Hámark (°C)	Lágmark (°C)	Úrkoma (mm)	Úrkomutegund	Snjóþýpt (cm)	Snjóhula (0-4)	Sóliskín (klst)	Meðalvindur (m/s)	Mesti vindur (m/s)	Hviða (m/s)
1.	-3.9	-1.7	-5.7						4.3	6.5	
2.	-1.5	-0.1	-4.8	3.4	sn	5	4		7.3	12.0	
3.	3.3	6.3	-0.5	34.8	sl		2		5.3	9.0	
4.	2.9	4.8	-0.6	16.8	sl		2		2.5	6.5	
5.	4.8	6.0	3.1	18.5	ri		2		8.3	12.5	
6.	4.1	6.5	2.3	8.0	ri		2		4.3	6.5	
7.	3.8	8.4	1.5	1.5	ri				1.1	2.5	
8.	2.9	6.0	-0.8						3.6	9.0	
9.	4.5	6.1	2.9	17.2	ri				6.1	9.0	
10.	4.0	6.2	3.2	0.8	ri				4.3	12.5	
11.	4.4	6.6	0.5	11.3	sl				6.6	12.5	
12.	5.4	7.9	3.3	6.8	ri				5.3	9.0	
13.	4.5	7.7	1.3	4.2	ri				4.4	9.0	
14.	4.2	7.8	2.9	12.2	sl				5.8	9.0	
15.	1.9	4.8	-0.8	2.3	sl				2.2	9.0	
16.	1.3	5.1	0.1						1.9	4.5	
17.	0.1	2.0	-1.9	1.3	sl	1	4		2.1	4.5	
18.	-2.8	1.6	-4.7						11.1	18.5	
19.	-3.2	-0.7	-3.8						7.8	12.0	
20.	-1.6	0.9	-7.4						1.7	4.5	
21.	3.6	7.2	-0.6	10.5	sl				3.4	6.5	
22.	5.2	6.9	2.3						6.8	9.0	
23.	6.6	9.1	4.7	4.9	ri				5.8	9.0	
24.	5.2	6.4	1.4	1.5	sl				6.8	12.0	
25.	6.6	8.2	4.8	10.7	ri				1.4	2.5	
26.	6.8	8.5	4.7	34.0	ri				2.6	4.5	
27.	4.7	7.7	3.4	3.3	ri				1.8	4.5	
28.	1.9	6.5	-1.3						2.1	4.5	
29.	2.9	8.7	-1.3						0.8	2.5	
30.	4.6	8.1	-1.0						3.6	6.5	
31.	7.9	9.2	6.7	0.4	ri				5.0	6.5	



Meðalhiti	=	3.1 °C
Meðalhámarkshiti	=	5.8 °C
Meðallágmarkshiti	=	0.4 °C
Úrkomumagn	=	204.5 mm
Meðalvindhraði	=	4.4 m/s

Útgefandi : **Veðurstofa Íslands**
 Heimilisfang : **Bústaðavegur 9**
150 Reykjavík

Dags	Meðalhiti (°C)	Hámark (°C)	Lágmark (°C)	Úrkoma (mm)	Úrkomutegund	Snjóþýpt (cm)	Snjóhula (0-4)	Sólskín(klst)	Meðalvindur (m/s)	Mesti vindur (m/s)	Hviða (m/s)
1.	-2.5	1.3	-5.7				2		3.8	8.2	10.8
2.	0.6	3.5	-2.6	0.0	sn		2		8.2	12.9	16.5
3.	2.9	5.3	0.5	2.7	sl		2		4.6	9.8	11.3
4.	2.3	5.2	-0.7	3.6	sl	1	4		5.6	9.3	12.9
5.	3.1	5.0	2.7	0.5	ri				11.4	13.4	19.0
6.	2.6	5.9	1.0	0.5	sl				7.4	11.8	15.4
7.	2.9	6.0	0.7	0.0	sl				3.7	7.2	10.3
8.	1.8	5.1	0.7	1.4	sl				5.6	14.9	18.0
9.	2.1	5.6	0.7	1.9	sl				4.1	16.0	23.2
10.	2.8	3.9	0.0	10.7	sl				10.4	21.6	28.8
11.	4.4	6.6	0.7	15.0	sl				11.3	19.6	29.3
12.	3.2	6.4	2.1	2.2	ri				4.5	7.7	10.3
13.	3.7	5.3	0.5	1.1	sl				8.7	16.5	25.2
14.	2.1	7.5	0.4	8.6	sl		2		12.3	20.1	27.3
15.	1.7	5.0	-0.8	1.5	sl	2	4		7.3	14.4	19.0
16.	1.9	3.9	0.2	8.1	sl	3	4		9.1	16.0	22.1
17.	1.5	3.6	-0.4	6.5	sl	2	4		9.7	16.5	24.2
18.	-3.1	7.8	-4.0	3.5	sn		2		11.0	14.9	19.0
19.	-2.9	-1.3	-5.2	0.0	sn		0		6.6	13.4	16.5
20.	3.0	7.4	-3.3	0.5	sl		2		11.1	18.5	25.2
21.	2.0	7.3	0.5	20.5	sl				12.1	16.0	22.1
22.	4.8	6.7	-0.5	6.2	sl		2		14.7	20.1	28.8
23.	3.2	8.1	-0.6	12.7	sl				10.3	18.0	24.7
24.	3.9	7.9	0.2	6.8	sl				12.7	19.0	26.8
25.	2.9	6.3	1.1	9.1	sl		2		6.6	16.0	23.7
26.	2.8	5.6	1.1	6.7	sl				4.2	9.8	12.9
27.	1.3	5.6	-0.7	2.7	sn	2	4		2.9	7.7	9.8
28.	2.1	5.2	-2.0	0.1	sn				2.9	5.1	7.7
29.	4.5	9.5	1.4	0.6	sl				4.9	8.2	12.4
30.	6.4	9.6	3.1	0.0	ri				9.2	12.9	18.0
31.	8.0	11.0	6.4	13.6	ri				12.0	16.0	21.6



Meðalhiti	=	2.4 °C
Frávik frá meðaltali 1961-90	=	1.7 °C
Meðalhámarkshiti	=	5.9 °C
Meðallágmarkshiti	=	-0.1 °C
Úrkomumagn	=	147.7 mm
Hlutfall úrkomu af meðaltali 1961-90	=	147.4 %
Meðalvindhraði	=	8.0 m/s