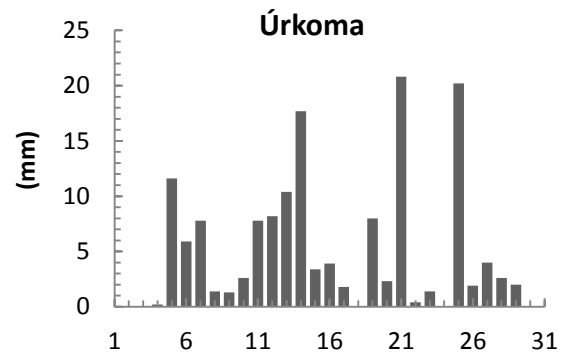
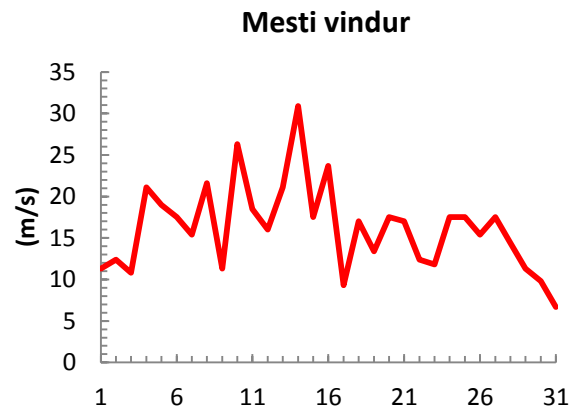
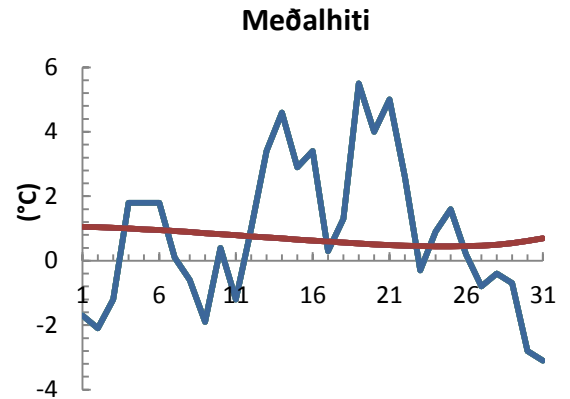


dagur	meðalhiti (°C)	Hámark (°C)	Lágmark (°C)	Úrkoma (mm)	Úrkomutegund	Snjódýpt (cm)	Snjóhula (0-4)	Sólskin (klst)	Meðalvindur (m/s)	Mesti vindur (m/s)	Hviða (m/s)
1	-1.7	-0.4	-4.8	0.0		0	0		7.0	11.3	14.4
2	-2.1	0.0	-2.6	0.0		0	2		7.3	12.4	14.9
3	-1.2	1.2	-4.7	0.0		0	2		5.9	10.8	13.9
4	1.8	5.5	-2.0	0.2	sn	0	2		10.6	21.1	29.9
5	1.8	4.5	-0.2	11.6	sl	0	2		12.5	19.0	25.2
6	1.8	4.2	0.0	5.9	sl	0	0		12.6	17.5	27.8
7	0.1	1.9	-1.4	7.8	sl	3	4		8.2	15.4	18.5
8	-0.6	1.3	-1.8	1.4	sn	5	4		14.2	21.6	25.7
9	-1.9	0.3	-2.8	1.3	sn	8	4		4.9	11.3	17.0
10	0.4	4.6	-4.5	2.6	sn	13	4		13.4	26.3	35.5
11	-1.2	4.0	-3.2	7.8	sl	14	4		10.8	18.5	23.7
12	1.0	2.3	-1.6	8.2	sn	15	4		7.8	16.0	20.1
13	3.4	6.1	1.0	10.4	sl	12	4		10.9	21.1	29.9
14	4.6	7.3	2.5	17.7	ri	0	0		16.1	30.9	40.2
15	2.9	3.7	0.3	3.4	sl	0	0		9.4	17.5	25.2
16	3.4	7.8	1.5	3.9	sl	0	0		13.8	23.7	33.5
17	0.3	3.8	-1.8	1.8	sl	0	2		2.7	9.3	11.8
18	1.3	2.0	-0.6	0.0		0	2		8.5	17.0	23.7
19	5.5	7.2	0.1	8.0	sl	0	0		5.2	13.4	17.0
20	4.0	6.0	1.1	2.3	ri	0	0		8.5	17.5	25.2
21	5.0	7.0	3.8	20.8	ri	0	0		10.7	17.0	24.2
22	2.6	5.6	2.3	0.4	ri	0	0		6.1	12.4	16.5
23	-0.3	2.8	-1.2	1.4	sl	0	2		7.2	11.8	14.9
24	0.9	3.7	-3.1	0.0		0	0		8.2	17.5	22.1
25	1.6	3.7	-0.9	20.2	sl	0	2		5.0	17.5	25.2
26	0.2	4.1	-1.5	1.9	sl	0	2		8.8	15.4	20.6
27	-0.8	2.0	-2.4	4.0	sn	7	4		9.0	17.5	25.7
28	-0.4	1.3	-2.3	2.6	sn	2	4		5.0	14.4	18.0
29	-0.7	1.8	-1.5	2.0	sn	7	4		5.1	11.3	12.9
30	-2.8	1.4	-3.8	0.0		7	4		5.7	9.8	12.4
31	-3.1	-0.3	-5.6	0.0		7	4		4.2	6.7	8.8



Meðalhiti (°C)	0.8
Frávik frá meðaltali 1961 - 1990 (°C)	0.2
Meðalhámarkshiti (°C)	3.4
Meðallágmarkshiti (°C)	-1.4
Úrkomumagn (mm)	147.6
Hlutfall úrkomu af meðaltali 1961-1990 (%)	147.3
Meðalvindhraði (m/s)	8.6

