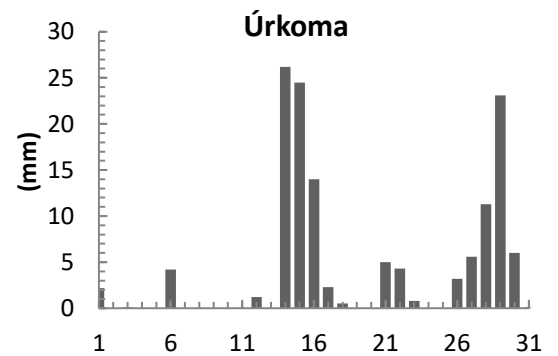
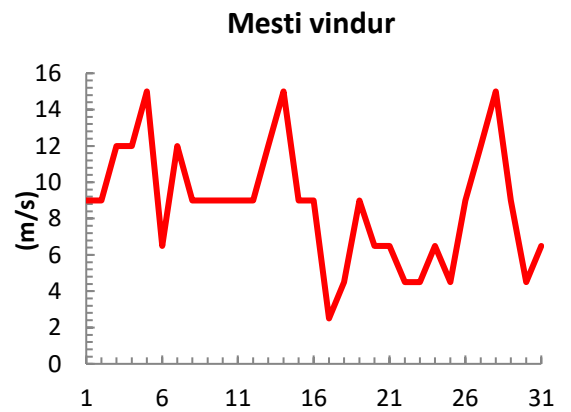
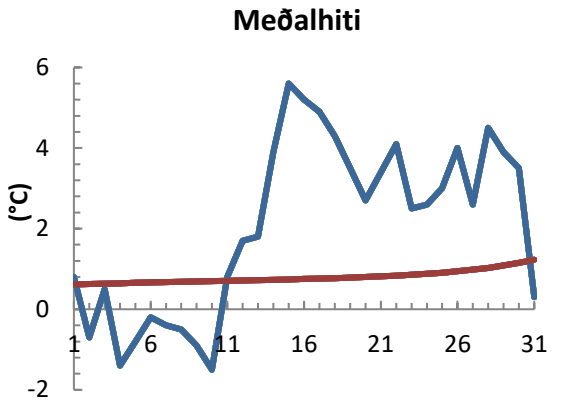


dagur	meðalhiti (°C)	Hámark (°C)	Lágmark (°C)	Úrkoma (mm)	Úrkomutegund	Snjódýpt (cm)	Snjóhula (0-4)	Sólskin (klst)	Meðalvindur (m/s)	Mesti vindur (m/s)	Hviða (m/s)
1	0.8	4.8	-0.4	2.2	ri	0	0		7.6	9.0	
2	-0.7	1.5	-1.2	0.0		0	0		8.4	9.0	
3	0.5	1.8	-1.8	0.1	sn	0	0		10.2	12.0	
4	-1.4	0.4	-2.2	0.0		0	0		8.8	12.0	
5	-0.8	0.6	-2.8	0.0		0	0		9.7	15.0	
6	-0.2	1.8	-3.0	4.2	sn	13	4		5.0	6.5	
7	-0.4	0.4	-1.4	0.0		9	4		7.2	12.0	
8	-0.5	1.0	-1.8	0.0		8	4		5.3	9.0	
9	-0.9	1.4	-1.8	0.0		8	4		5.9	9.0	
10	-1.5	2.0	-4.6	0.0		8	4		5.8	9.0	
11	0.8	2.2	-1.8	0.0		7	4		5.6	9.0	
12	1.7	2.5	0.2	1.2	sl	7	4		6.7	9.0	
13	1.8	3.2	0.8	0.0		7	4		10.0	12.0	
14	3.9	5.6	0.6	26.2	sl	0	0		7.6	15.0	
15	5.6	6.0	3.3	24.5	ri	0	0		7.2	9.0	
16	5.2	6.0	4.8	14.0	ri	0	0		4.8	9.0	
17	4.9	7.6	3.8	2.3	ri	0	0		1.4	2.5	
18	4.3	8.4	2.2	0.5	ri	0	0		1.4	4.5	
19	3.5	8.2	-0.4	0.0		0	0		3.2	9.0	
20	2.7	5.6	-0.4	0.0		0	0		2.8	6.5	
21	3.4	6.5	-0.6	5.0	ri	0	0		2.2	6.5	
22	4.1	7.0	1.8	4.3	ri	0	0		2.9	4.5	
23	2.5	6.0	-1.2	0.8	ri	0	0		1.2	4.5	
24	2.6	6.2	-1.4	0.0		0	0		3.4	6.5	
25	3.0	7.4	-0.6	0.0		0	0		2.1	4.5	
26	4.0	5.0	2.3	3.2	ri	0	0		7.4	9.0	
27	2.6	4.6	1.4	5.6	ri	0	0		9.1	12.0	
28	4.5	6.0	1.4	11.3	sl	0	0		11.4	15.0	
29	3.9	6.4	3.6	23.1	ri	0	0		3.6	9.0	
30	3.5	8.0	0.0	6.0	ri	0	0		1.8	4.5	
31	0.3	5.0	-0.2	0.1	ri	0	0		6.0	6.5	



Meðalhiti (°C)	2.0
Frávik frá meðaltali 1961 - 1990 (°C)	0.9
Meðalhámarkshiti (°C)	4.5
Meðallágmarkshiti (°C)	-0.1
Úrkomumagn (mm)	134.6
Hlutfall úrkomu af meðaltali 1961-1990 (%)	122.4
Meðalvindhraði (m/s)	5.7