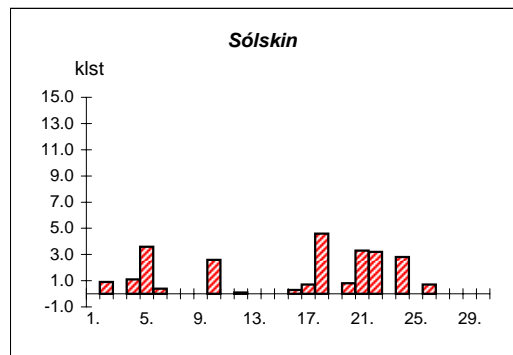
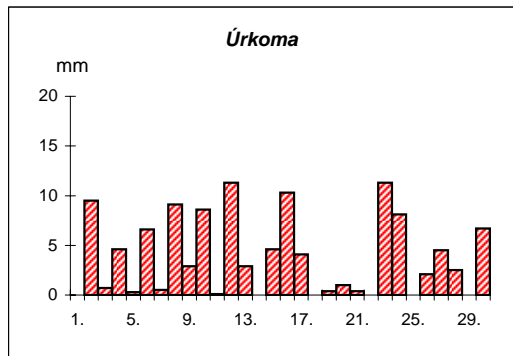
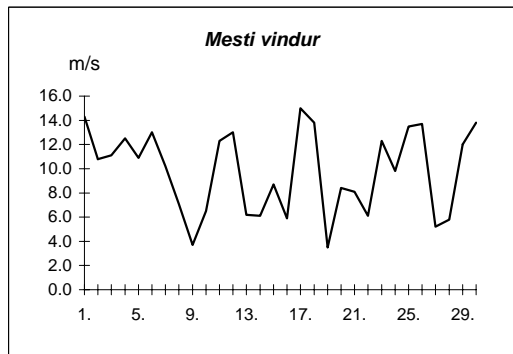
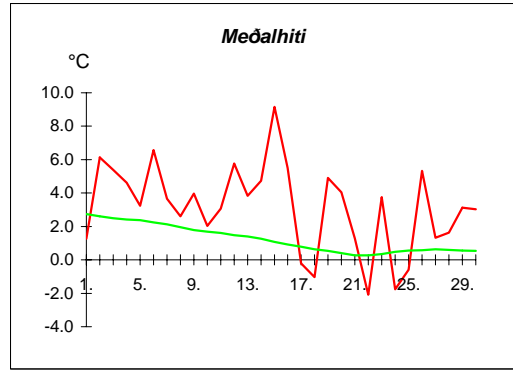


Reykjavík nóvember 2007

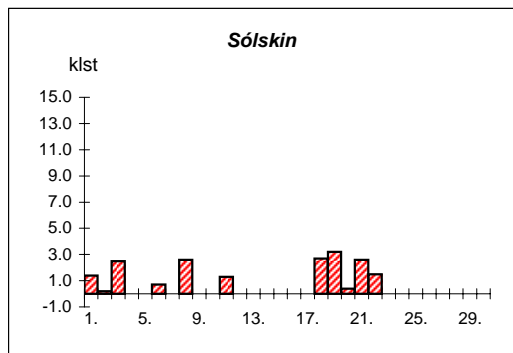
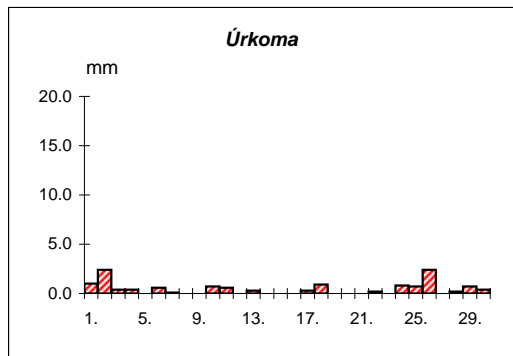
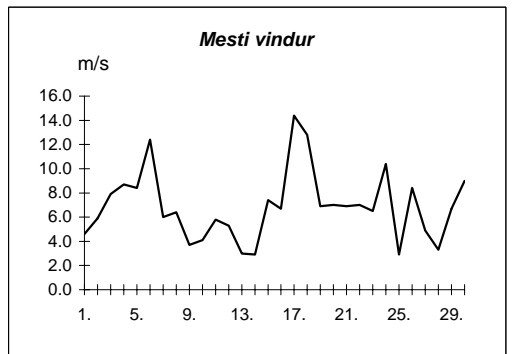
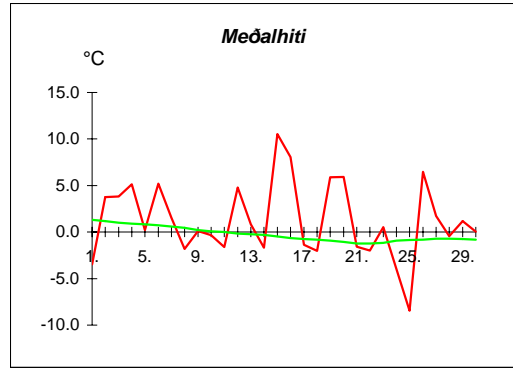
Dags	Meðalhiti (°C)	Hámark (°C)	Lágmark (°C)	Úrkoma (mm)	Úrkomutegund	Snjódýpt (cm)	Snjóhula (0-4)	Sólskin(klst)	Meðalvindur (m/s)	Mesti vindur (m/s)	Hviða (m/s)
1.	1.3	4.2	-3.8					0.0	5.7	14.3	24.1
2.	6.1	7.8	2.9	9.5	ri			0.9	5.3	10.8	19.6
3.	5.4	8.0	1.0	0.7	ri			0.0	6.4	11.1	17.8
4.	4.6	8.0	3.9	4.6	ri			1.1	8.5	12.5	19.4
5.	3.2	4.5	1.0	0.3	ri			3.6	5.6	10.9	17.3
6.	6.6	7.7	3.2	6.6	sl			0.4	8.6	13.0	20.2
7.	3.7	7.2	2.0	0.5	ri			0.0	4.6	10.2	15.9
8.	2.6	4.5	-0.3	9.1	ri			0.0	3.7	7.1	11.8
9.	4.0	5.6	2.4	2.9	ri			0.0	1.4	3.7	6.8
10.	2.0	5.2	1.8	8.6	ri			2.6	3.9	6.5	11.2
11.	3.1	6.3	-1.7	0.1	ri			0.0	5.6	12.3	20.0
12.	5.8	8.2	4.8	11.3	ri			0.1	4.3	13.0	19.5
13.	3.8	5.7	3.6	2.9	ri			0.0	2.4	6.2	10.3
14.	4.7	5.1	3.0	0.0	ri			0.0	3.4	6.1	10.3
15.	9.2	9.5	5.0	4.6	ri			0.0	6.6	8.7	12.6
16.	5.5	10.1	3.4	10.3	ri			0.3	2.5	5.9	8.1
17.	-0.2	3.6	-1.7	4.1	ri			0.7	8.5	15.0	24.0
18.	-1.0	0.3	-2.1	0.0	sn			4.6	4.0	13.8	20.4
19.	4.9	5.8	-2.3	0.4	ri			0.0	1.8	3.5	5.2
20.	4.0	6.4	3.2	1.0	ri			0.8	4.7	8.4	13.4
21.	1.3	3.7	1.1	0.4	ri			3.3	4.3	8.1	12.8
22.	-2.1	1.1	-4.8					3.2	1.8	6.1	9.3
23.	3.8	6.1	-0.5	11.3	ri			0.0	5.6	12.3	19.7
24.	-1.8	4.5	-3.8	8.1	ri			2.8	4.3	9.8	17.1
25.	-0.6	1.7	-5.6					0.0	7.7	13.5	22.1
26.	5.3	9.0	1.5	2.1	sn			0.7	5.8	13.7	23.1
27.	1.3	4.2	0.1	4.5	sl			0.0	2.6	5.2	8.4
28.	1.6	2.4	0.7	2.5	sl			0.0	3.9	5.8	10.0
29.	3.1	5.4	1.1					0.0	7.3	12.0	24.2
30.	3.0	5.5	2.2	6.7	sl			0.0	10.2	13.8	23.6



Meðalhiti	=	3.1 °C
Frávik frá meðaltali 1961-90	=	2.0 °C
Meðalhámarkshiti	=	5.6 °C
Meðallágmarkshiti	=	0.7 °C
Úrkomumagn	=	113.1 mm
Hlutfall úrkomu af meðaltali 1961-90	=	154.9 %
Meðalvindhraði	=	5.0 m/s
Sólskinsstundir	=	25.1 klst

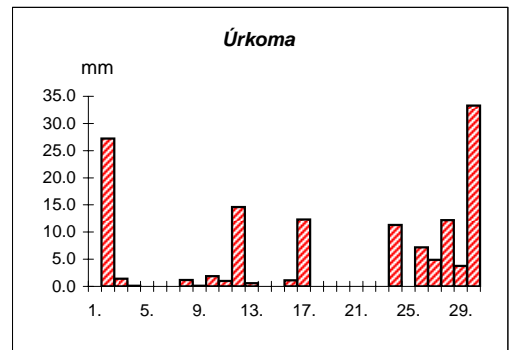
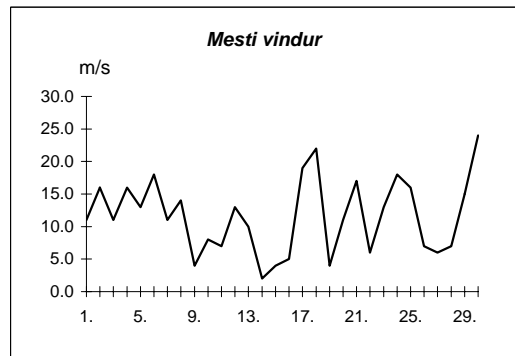
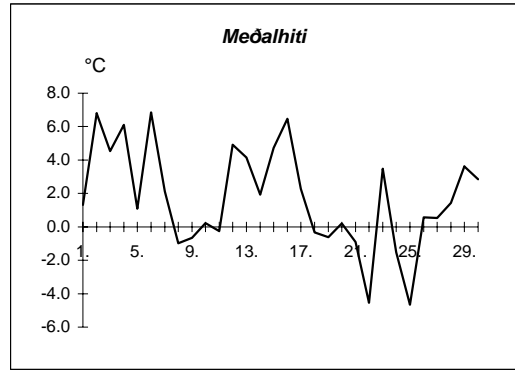
Akureyri nóvember 2007

Dags	Meðalhiti (°C)	Hámark (°C)	Lágmark (°C)	Úrkoma (mm)	Úrkomutegund	Snjódýpt (cm)	Snjóhula (0-4)	Sólskin(klst)	Meðalvindur (m/s)	Mesti vindur (m/s)	Hviða (m/s)
1.	-3.5	-0.3	-6.9	1.0	sl	11	4	1.4	1.9	4.6	8.1
2.	3.8	6.0	-3.8	2.4	sl	7	2	0.2	2.8	5.9	11.3
3.	3.8	6.0	-0.2	0.4	ri	6	2	2.5	3.2	7.9	15.7
4.	5.1	10.2	3.8	0.4	ri			0.0	4.8	8.7	19.1
5.	0.2	4.6	-2.0	0.0	sl			0.0	3.4	8.4	14.0
6.	5.2	9.0	-1.8	0.6	sn			0.7	5.3	12.4	23.4
7.	1.5	5.3	0.4	0.1	ri			0.0	2.3	6.0	12.8
8.	-1.8	1.0	-2.3	0.0	sn			2.6	1.8	6.4	10.0
9.	0.1	1.6	-3.1	0.0	sn			0.0	1.5	3.7	8.4
10.	-0.3	1.0	-1.5	0.7	sn		2	0.0	1.6	4.1	6.5
11.	-1.6	2.0	-6.0	0.6	sn		2	1.3	2.2	5.8	10.2
12.	4.8	8.0	-4.0	0.0	ri			0.0	1.6	5.3	10.2
13.	0.8	4.2	-0.1	0.3	ri			0.0	1.1	3.0	5.0
14.	-1.7	1.2	-3.9					0.0	1.1	2.9	4.5
15.	10.5	12.3	-1.9	0.0	ri			0.0	4.4	7.4	14.0
16.	8.1	12.1	6.6	0.0	ri			0.0	3.0	6.7	12.0
17.	-1.4	7.1	-3.0	0.3	sn			0.0	10.2	14.4	21.8
18.	-2.0	-1.2	-5.4	0.9	sn			2.7	6.0	12.8	18.5
19.	5.9	6.3	-3.6					3.2	3.6	6.9	13.8
20.	5.9	10.6	3.2					0.4	3.6	7.0	13.8
21.	-1.6	3.2	-2.2					2.6	2.3	6.9	12.5
22.	-2.0	1.7	-6.5	0.2	sn			1.5	3.9	7.0	12.5
23.	0.5	4.5	-0.5	0.0	sn			0.0	1.6	6.5	11.3
24.	-4.0	1.6	-6.2	0.8	sn	3	2	0.0	6.1	10.4	15.8
25.	-8.5	-6.2	-10.0	0.7	sn			0.0	1.4	2.9	4.8
26.	6.5	11.1	-7.6	2.4	sn		2	0.0	4.3	8.4	14.5
27.	1.7	9.5	0.7	0.0	sn			0.0	2.1	4.9	9.6
28.	-0.5	2.6	-0.8	0.2	sn	1	4	0.0	0.9	3.3	5.8
29.	1.2	3.5	-1.4	0.7	sl	2	4	0.0	2.6	6.7	16.0
30.	0.0	3.4	-1.6	0.4	sn	2	4	0.0	4.0	9.0	18.8



Meðalhiti	=	1.2 °C
Frávik frá meðaltali 1961-90	=	1.6 °C
Meðalhámarkshiti	=	4.7 °C
Meðallágmarkshiti	=	-2.4 °C
Úrkomumagn	=	13.1 mm
Hlutfall úrkomu af meðaltali 1961-90	=	24.3 %
Meðalvindhraði	=	3.2 m/s
Sólskinsstundir	=	19.1 klst

Dags	Meðalhiti (°C)	Hámark (°C)	Lágmark (°C)	Úrkoma (mm)	Úrkomutegund	Snjódýpt (cm)	Snjöhula (0-4)	Sólskín(klst)	Meðalvindur (m/s)	Mest vindur (m/s)	Hviða (m/s)
1.	1.3	2.9	-2.1						5.4	11.0	
2.	6.8	8.8	1.7	27.2	sn				10.2	16.0	
3.	4.5	8.7	2.1	1.4	ri				4.0	11.0	
4.	6.1	9.7	2.9	0.1	ri				12.3	16.0	
5.	1.1	7.0	-0.8						6.5	13.0	
6.	6.9	8.3	-1.9						11.5	18.0	
7.	2.1	7.6	0.0						4.4	11.0	
8.	-1.0	2.1	-1.8	1.2	sl		2		7.9	14.0	
9.	-0.7	0.7	-3.1	0.1	sn				2.0	4.0	
10.	0.2	1.2	-1.0	1.9	sn	2	2		5.0	8.0	
11.	-0.3	1.0	-2.8	1.0	sn		2		4.0	7.0	
12.	4.9	7.5	-0.5	14.6	ri				5.5	13.0	
13.	4.2	7.2	1.5	0.6	ri				5.4	10.0	
14.	1.9	3.7	0.7						1.8	2.0	
15.	4.7	7.3	0.0						2.3	4.0	
16.	6.5	8.5	4.6	1.1	ri				2.9	5.0	
17.	2.3	7.9	0.3	12.3	ri				11.8	19.0	
18.	-0.3	1.5	-1.4						12.1	22.0	
19.	-0.6	1.7	-1.7						2.9	4.0	
20.	0.2	1.4	-2.6						3.3	11.0	
21.	-0.9	5.4	-1.9						10.2	17.0	
22.	-4.5	-1.0	-6.1						3.3	6.0	
23.	3.5	6.7	-4.9	0.0	ri				7.9	13.0	
24.	-1.5	4.9	-3.6	11.3	ri				12.8	18.0	
25.	-4.7	-3.2	-6.0						6.3	16.0	
26.	0.6	3.0	-5.0	7.2	sn	8	4		3.7	7.0	
27.	0.5	3.2	-1.7	4.9	sl	4	2		3.3	6.0	
28.	1.4	3.3	-2.2	12.2	sl				2.4	7.0	
29.	3.6	4.0	0.3	3.8	ri				8.7	15.0	
30.	2.9	4.5	1.7	33.3	ri				16.8	24.0	

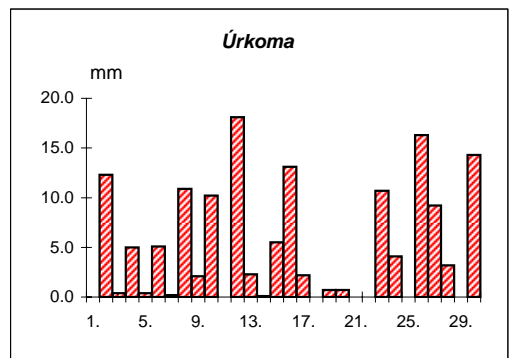
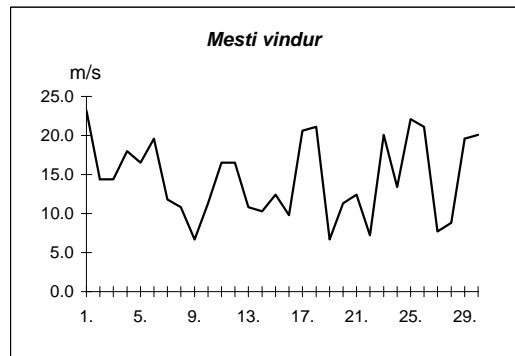
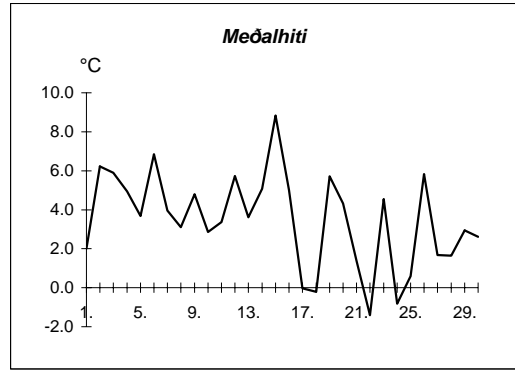


Meðalhiti	=	1.7 °C
Meðalhámarkshiti	=	4.5 °C
Meðallágmarkshiti	=	-1.2 °C
Úrkomumagn	=	134.2 mm
Meðalvindhraði	=	2.9 m/s

Útgefandi : **Veðurstofa Íslands**
 Heimilisfang : **Bústaðavegur 9**
150 Reykjavík

Keflavík nóvember 2007

Dags	Meðalhiti (°C)	Hámark (°C)	Lágmark (°C)	Úrkoma (mm)	Úrkomutegund	Snjódypt (cm)	Snjóhula (0-4)	Sólskín (klst)	Meðalvindur (m/s)	Mesti vindur (m/s)	Hviða (m/s)
1.	2.0	4.6	-2.6						10.0	23.2	31.4
2.	6.2	11.6	2.2	12.3	ri				9.0	14.4	19.0
3.	5.9	9.1	2.1	0.4	ri				9.0	14.4	22.7
4.	5.0	8.5	4.0	5.0	ri				13.9	18.0	23.7
5.	3.7	5.6	1.0	0.4	sl				9.0	16.5	20.6
6.	6.9	8.6	4.4	5.1	ri				14.4	19.6	25.7
7.	4.0	8.3	2.4	0.2	ri				7.3	11.8	15.4
8.	3.1	5.3	-0.4	10.9	sl				6.6	10.8	14.9
9.	4.8	6.7	2.8	2.1	ri				3.4	6.7	8.2
10.	2.9	9.5	1.5	10.2	ri				6.3	11.3	14.9
11.	3.4	7.4	-1.9	0.0	ri				7.7	16.5	22.7
12.	5.7	10.5	4.8	18.1	ri				8.3	16.5	23.7
13.	3.6	5.4	3.3	2.3	ri				4.1	10.8	14.4
14.	5.1	5.9	2.9	0.1	ri				5.9	10.3	14.4
15.	8.8	9.5	5.8	5.5	ri				9.7	12.4	16.0
16.	5.0	11.1	3.2	13.1	ri				5.6	9.8	12.4
17.	0.0	4.9	-1.6	2.2	sl				12.1	20.6	26.3
18.	-0.2	2.4	-2.0	0.0	sn				6.3	21.1	26.8
19.	5.7	7.0	-2.1	0.7	ri				4.5	6.7	9.3
20.	4.3	7.3	2.7	0.7	ri				7.9	11.3	15.4
21.	1.4	4.3	0.7						7.0	12.4	16.5
22.	-1.4	2.7	-4.7						4.4	7.2	10.3
23.	4.6	7.5	-0.8	10.7	ri				9.1	20.1	27.3
24.	-0.8	6.7	-2.7	4.1	sl				7.7	13.4	16.5
25.	0.6	4.5	-4.4						10.2	22.1	30.9
26.	5.8	10.0	1.4	16.3	sl				10.4	21.1	31.9
27.	1.7	5.5	0.2	9.2	ri				3.9	7.7	10.8
28.	1.7	3.0	0.5	3.2	ri				5.6	8.8	11.3
29.	2.9	7.2	0.4	0.0	ri				10.8	19.6	27.3
30.	2.6	7.6	1.7	14.3	ri				15.9	20.1	27.8



Meðalhiti	=	3.5 °C
Frávik frá meðaltali 1961-90	=	1.9 °C
Meðalhámarkshiti	=	6.9 °C
Meðallágmarkshiti	=	0.8 °C
Úrkomumagn	=	147.1 mm
Hlutfall úrkomu af meðaltali 1961-90	=	148.3 %
Meðalvindhraði	=	8.2 m/s