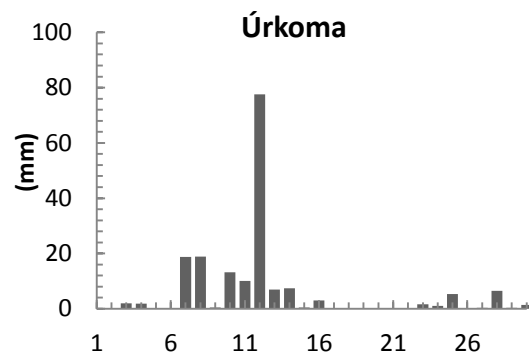
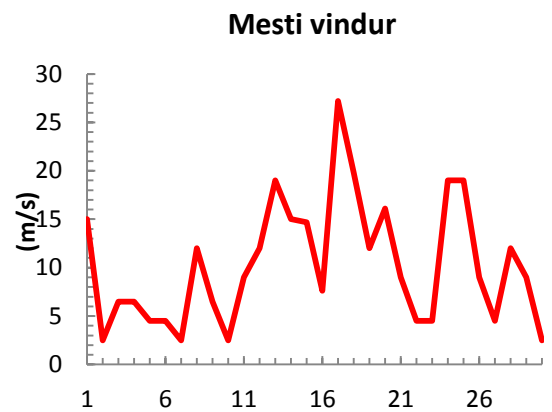
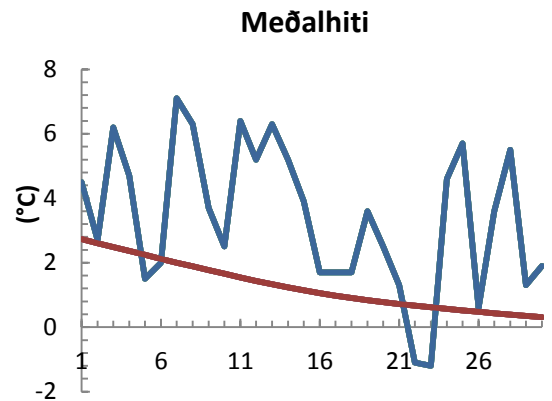


dagur	meðalhiti (°C)	Hámark (°C)	Lágmark (°C)	Úrkoma (mm)	Úrkomutegund	Snjódýpt (cm)	Snjóhúla (0-4)	Sólskin (klst)	Meðalvindur (m/s)	Mesti vindur (m/s)	Hviða (m/s)
1	4.5	7.0	3.9	0.0		0	0		5.9	15.0	
2	2.7	4.5	0.7	0.0		0	0		1.4	2.5	
3	6.2	6.8	2.9	2.0	ri	0	0		4.0	6.5	
4	4.7	6.8	4.1	1.8	ri	0	0		3.7	6.5	
5	1.5	5.2	0.3	0.0		0	0		2.5	4.5	
6	2.0	3.8	-1.9	0.0		0	0		1.9	4.5	
7	7.1	7.8	3.3	18.8	ri	0	0		0.9	2.5	
8	6.3	9.0	5.1	18.9	ri	0	0		6.0	12.0	
9	3.7	5.6	2.3	0.4	ri	0	0		2.7	6.5	
10	2.5	4.5	1.3	13.2	ri	0	0		1.3	2.5	
11	6.4	9.0	-0.3	10.1	ri	0	0		5.8	9.0	
12	5.2	9.0	3.3	77.6	ri	0	0		4.2	12.0	
13	6.3	8.8	0.5	6.9	ri	0	0		8.9	19.0	
14	5.2	7.4	3.3	7.4	ri	0	0		5.6	15.0	
15	3.9	6.0	2.1	0.4	ri	0	0		8.7	14.7	
16	1.7	5.0	-1.3	3.0	ri	0	0		5.0	7.6	
17	1.7	4.3	0.4	0.0		0	0		11.6	27.2	
18	1.7	4.2	0.0	0.0		0	0		14.4	19.8	
19	3.6	5.3	1.3	0.0		0	0		8.2	12.0	
20	2.5	4.2	0.2	0.0		0	0		9.7	16.1	
21	1.3	5.5	0.1	0.0		0	0		6.6	9.0	
22	-1.1	0.2	-2.8	0.0		0	0		3.1	4.5	
23	-1.2	1.0	-4.7	1.6	sn	3	4		2.0	4.5	
24	4.6	7.5	0.3	1.0	ri	0	2		6.8	19.0	
25	5.7	7.8	4.3	5.3	ri	0	0		10.9	19.0	
26	0.6	5.0	-0.7	0.0		0	0		3.7	9.0	
27	3.6	4.5	-1.5	0.3	ri	0	0		2.4	4.5	
28	5.5	6.6	4.1	6.5	ri	0	0		5.9	12.0	
29	1.3	5.5	-0.9	0.3	ri	0	0		2.3	9.0	
30	1.9	2.5	-0.3	1.4	ri	0	0		1.6	2.5	



Meðalhiti (°C)	3.4
Frávik frá meðaltali 1961 - 1990 (°C)	0.5
Meðalhámarkshiti (°C)	5.7
Meðallágmarkshiti (°C)	1.0
Úrkomumagn (mm)	176.9
Hlutfall úrkomu af meðaltali 1961-1990 (%)	303.0
Meðalvindhraði (m/s)	5.3

