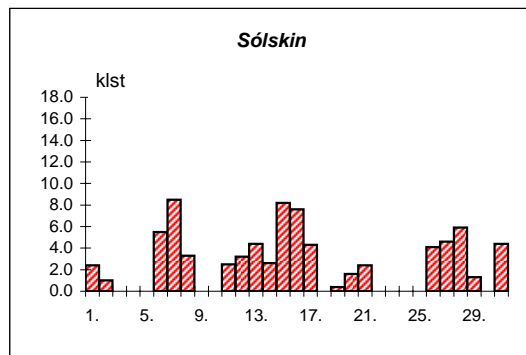
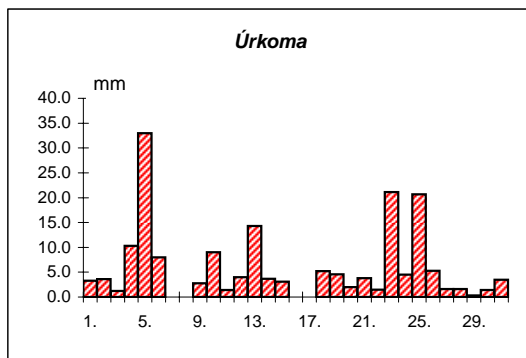
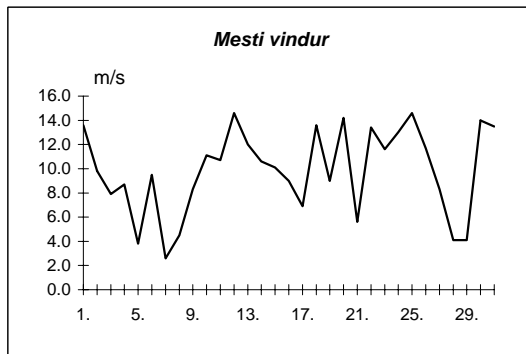
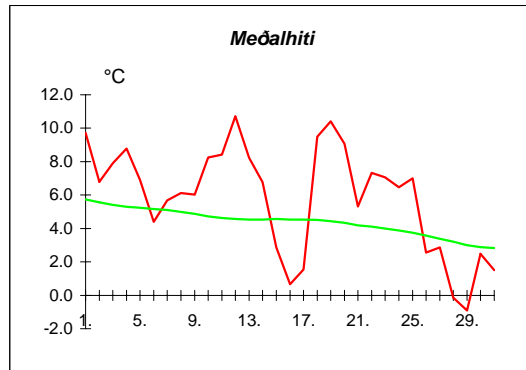


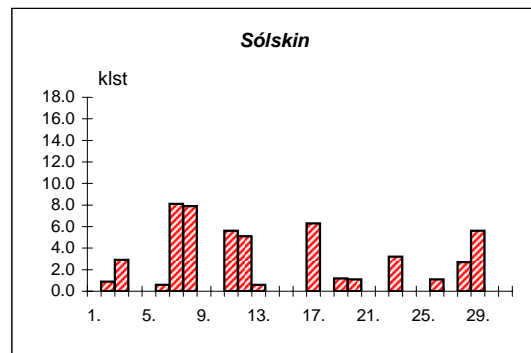
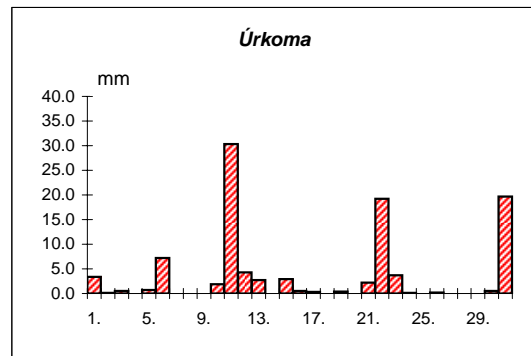
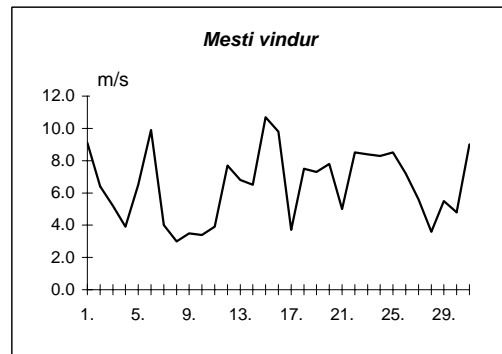
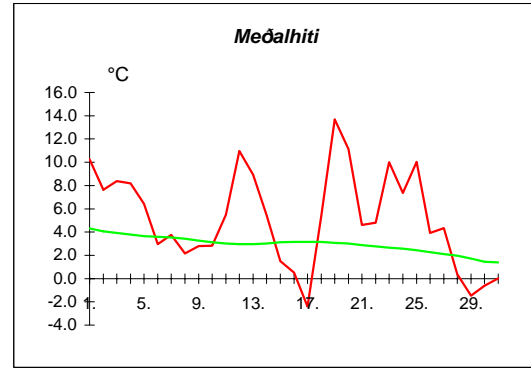
Reykjavík október 2007

Dags	Meðalhiti (°C)	Hámark (°C)	Lágmark (°C)	Úrkoma (mm)	Úrkomutegund	Snjódypt (cm)	Snjóhula (0-4)	Sólskin(klst)	Meðalvindur (m/s)	Mesti vindur (m/s)	Hviða (m/s)
1.	9.7	11.3	6.2	3.3	ri			2.4	8.5	13.6	20.3
2.	6.8	9.7	6.5	3.6	ri			1.0	5.2	9.8	14.7
3.	7.9	9.5	3.8	1.2	ri			0.0	4.1	7.9	12.4
4.	8.8	10.5	6.9	10.3	ri			0.0	4.3	8.7	13.9
5.	6.9	10.5	6.6	33.0	ri			0.0	1.7	3.8	11.9
6.	4.4	7.3	2.2	8.0	ri			5.5	4.5	9.5	14.9
7.	5.7	9.3	3.1					8.5	1.3	2.6	4.3
8.	6.1	9.1	3.1					3.3	3.0	4.5	7.1
9.	6.0	8.1	5.1	2.8	ri			0.0	3.9	8.3	11.9
10.	8.3	10.4	4.9	9.0	ri			0.0	5.3	11.1	17.3
11.	8.4	11.1	6.7	1.4	ri			2.5	3.9	10.7	18.0
12.	10.7	12.0	7.4	4.0	ri			3.2	8.4	14.6	20.4
13.	8.2	11.0	7.3	14.3	ri			4.4	6.3	12.0	18.0
14.	6.8	8.4	4.9	3.7	ri			2.6	5.2	10.6	12.0
15.	2.9	7.5	1.9	3.1	ri			8.2	5.8	10.1	16.3
16.	0.7	2.9	0.1					7.6	5.1	9.0	15.2
17.	1.5	4.7	-3.5					4.3	3.8	6.9	10.3
18.	9.5	11.0	3.5	5.2	ri			0.0	8.0	13.6	22.2
19.	10.4	11.8	9.2	4.6	ri			0.4	5.0	9.0	13.8
20.	9.1	11.1	8.7	2.0	ri			1.6	7.2	14.2	20.4
21.	5.3	9.1	4.3	3.8	ri			2.4	2.4	5.6	8.9
22.	7.3	10.8	3.0	1.5	ri			0.0	7.4	13.4	23.5
23.	7.0	11.0	4.9	21.1	ri			0.0	8.3	11.6	21.5
24.	6.5	7.2	3.6	4.5	ri			0.0	9.1	13.0	21.9
25.	7.0	10.5	4.0	20.7	ri			0.0	9.6	14.6	21.0
26.	2.6	5.0	1.6	5.3	sl			4.1	6.0	11.7	18.2
27.	2.9	5.1	1.4	1.6	ri			4.6	3.8	8.3	13.2
28.	-0.1	3.0	-1.2	1.6	sl	1	4	5.9	1.9	4.1	6.5
29.	-0.9	1.7	-2.5	0.3	sn	1	4	1.3	2.6	4.1	5.7
30.	2.5	6.2	-2.8	1.4	sl	0	4	0.0	7.6	14.0	21.4
31.	1.5	8.2	0.5	3.5	ri			4.4	5.5	13.5	19.9



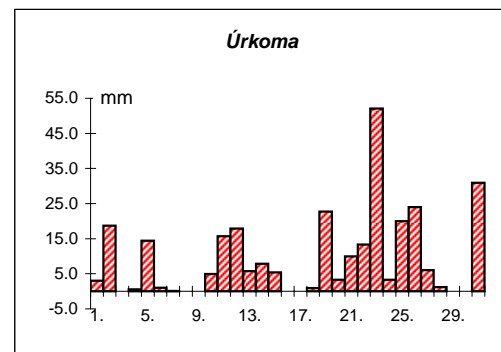
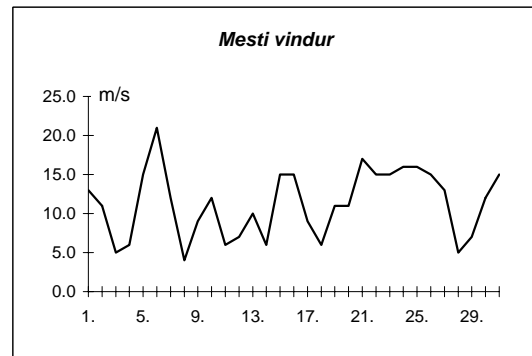
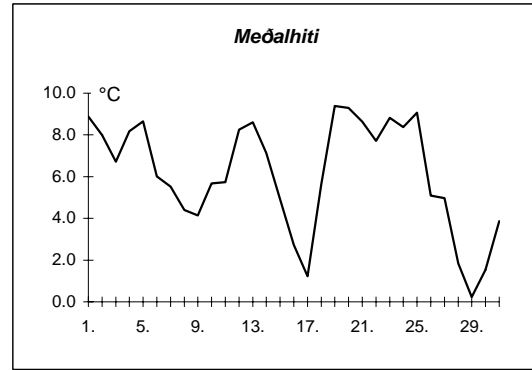
Meðalhiti	=	5.8 °C
Frávik frá meðaltali 1961-90	=	1.4 °C
Meðalhámarkshiti	=	8.5 °C
Meðallágmarkshiti	=	3.6 °C
Úrkomumagn	=	174.8 mm
Hlutfall úrkomu af meðaltali 1961-90	=	203.3 %
Meðalvindhraði	=	5.3 m/s
Sólskinsstundir	=	78.2 klst

Dags	Meðalhiti (°C)	Hámark (°C)	Lágmark (°C)	Úrkoma (mm)	Úrkomutegund	Snjóþýpt (cm)	Snjóhula (0-4)	Sólskin(klst)	Meðalvindur (m/s)	Mesti vindur (m/s)	Hviða (m/s)
1.	10.3	16.1	3.6	3.4	ri			0.0	4.9	9.1	18.5
2.	7.6	13.3	6.8	0.1	ri			0.9	2.5	6.4	13.3
3.	8.4	12.0	4.1	0.5	ri			2.9	3.0	5.2	10.3
4.	8.2	11.0	8.6	0.0	ri			0.0	1.3	3.9	6.8
5.	6.4	9.4	5.0	0.7	ri			0.0	2.8	6.5	11.3
6.	3.0	7.0	1.9	7.2	sl			0.6	5.6	9.9	15.2
7.	3.7	10.4	-2.1	0.0	sn			8.1	1.8	4.0	7.5
8.	2.2	7.5	-0.2					7.9	0.7	3.0	4.8
9.	2.8	4.7	-0.7					0.0	1.5	3.5	10.0
10.	2.8	3.9	1.0	1.9	sl			0.0	1.3	3.4	6.9
11.	5.5	7.5	3.4	30.3	ri			5.6	1.2	3.9	6.4
12.	11.0	14.3	4.8	4.3	ri			5.1	3.1	7.7	15.2
13.	8.9	12.3	8.9	2.7	ri			0.6	2.7	6.8	12.7
14.	5.5	10.0	4.5	0.0	ri			0.0	3.2	6.5	10.7
15.	1.5	6.3	1.1	2.9	ri			0.0	8.3	10.7	15.9
16.	0.5	2.0	-0.8	0.5	sn	2	2	0.0	5.5	9.8	14.2
17.	-2.4	0.8	-5.0	0.3	sn			6.3	1.9	3.7	5.8
18.	5.4	12.5	-4.7	0.0	ri			0.0	2.2	7.5	12.5
19.	13.7	18.0	11.0	0.4	ri			1.2	4.5	7.3	16.5
20.	11.1	15.7	10.2					1.1	5.0	7.8	15.6
21.	4.6	14.6	1.9	2.2	ri			0.0	2.3	5.0	11.3
22.	4.8	6.2	1.0	19.2	ri			0.0	2.7	8.5	16.1
23.	10.0	14.5	6.0	3.7	ri			3.2	5.1	8.4	16.0
24.	7.4	9.0	5.2	0.1	ri			0.0	6.0	8.3	19.1
25.	10.0	14.2	6.9	0.0	ri			0.0	5.5	8.5	16.1
26.	3.9	11.4	1.6	0.2	ri			1.1	3.2	7.2	12.7
27.	4.3	6.5	2.1	0.0	ri			0.0	3.3	5.6	10.6
28.	0.4	6.0	-0.4					2.7	1.8	3.6	5.9
29.	-1.5	1.8	-5.0					5.6	2.1	5.5	7.9
30.	-0.6	0.5	-2.4	0.5	sn	2	2	0.0	2.3	4.8	9.5
31.	0.0	2.5	-1.4	19.7	sl	12	4	0.0	4.9	9.0	15.2



Meðalhiti	=	5.1 °C
Frávik frá meðaltali 1961-90	=	2.1 °C
Meðalhámarkshiti	=	9.1 °C
Meðallágmarkshiti	=	2.5 °C
Úrkomumagn	=	100.8 mm
Hlutfall úrkomu af meðaltali 1961-90	=	173.8 %
Meðalvindhraði	=	3.3 m/s
Sólskinsstundir	=	52.9 klst

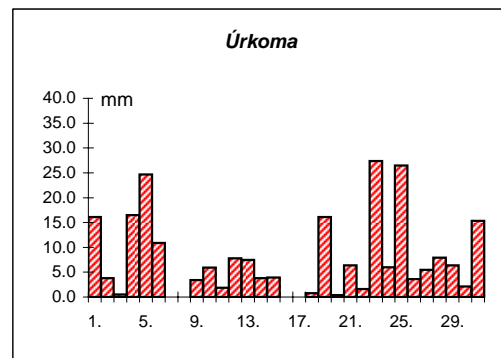
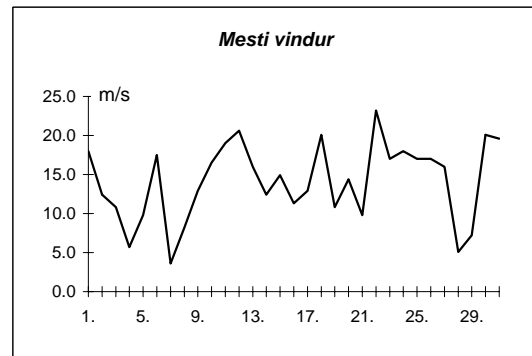
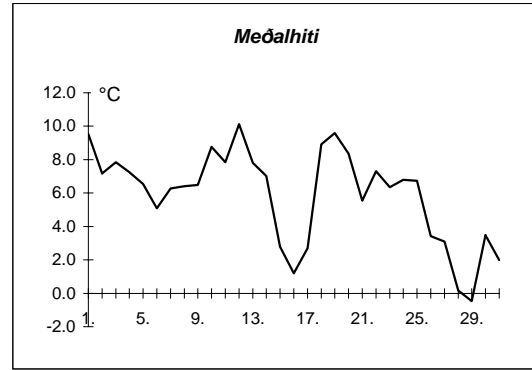
Dags	Meðalhiti (°C)	Hámark (°C)	Lágmark (°C)	Úrkoma (mm)	Úrkomutegund	Snjódypt (cm)	Snjóhula (0-4)	Sólskín(klst)	Meðalvindur (m/s)	Mesti vindur (m/s)
1.	8.9	10.6	5.7	3.0	ri				7.5	13.0
2.	8.0	10.5	8.0	18.7	ri				6.1	11.0
3.	6.7	10.0	1.3						2.6	5.0
4.	8.2	10.0	6.0	0.6	ri				3.2	6.0
5.	8.7	10.3	7.8	14.4	ri				9.7	15.0
6.	6.0	8.4	4.8	1.0	ri				15.2	21.0
7.	5.5	9.6	1.7	0.1	ri				4.5	12.0
8.	4.4	9.4	0.5						1.9	4.0
9.	4.1	6.9	2.6						5.3	9.0
10.	5.7	8.3	1.5	4.9	ri				5.7	12.0
11.	5.7	8.5	4.6	15.7	ri				3.3	6.0
12.	8.3	9.9	4.1	17.9	ri				3.8	7.0
13.	8.6	10.0	8.0	5.8	ri				7.4	10.0
14.	7.1	9.6	6.7	7.9	ri				3.9	6.0
15.	4.9	8.2	3.2	5.4	ri				10.4	15.0
16.	2.7	5.3	1.5						10.3	15.0
17.	1.2	4.1	-0.4						4.8	9.0
18.	5.6	8.2	0.1	0.9	ri				3.9	6.0
19.	9.4	10.9	6.7	22.7	ri				5.5	11.0
20.	9.3	10.2	8.7	3.3	ri				7.0	11.0
21.	8.6	10.7	7.2	10.0	ri				9.1	17.0
22.	7.7	8.4	5.5	13.3	ri				8.6	15.0
23.	8.8	10.8	6.8	52.1	ri				14.0	15.0
24.	8.4	9.5	6.5	3.3	ri				13.3	16.0
25.	9.1	11.0	8.0	20.0	ri				12.1	16.0
26.	5.1	10.8	3.3	24.0	ri				10.3	15.0
27.	5.0	6.4	3.1	6.0	ri				8.0	13.0
28.	1.8	5.6	0.0	1.2	ri				2.8	5.0
29.	0.2	3.4	-1.5						4.5	7.0
30.	1.5	3.5	-2.3						7.3	12.0
31.	3.9	7.5	1.9	30.9	ri				11.4	15.0



Meðalhiti	=	6.1 °C
Meðalhámarkshiti	=	8.6 °C
Meðallágmarkshiti	=	3.9 °C
Úrkomumagn	=	283.1 mm
Meðalvindhraði	=	7.2 m/s

Útgefandi : **Veðurstofa Íslands**  
 Heimilisfang : **Bústaðavegur 9**  
**150 Reykjavík**

Dags	Meðalhiti (°C)	Hámark (°C)	Lágmark (°C)	Úrkoma (mm)	Úrkomutegund	Snjódypt (cm)	Snjóhula (0-4)	Sólskin(Klst)	Meðalvindur (m/s)	Mesti vindur (m/s)	Hviða (m/s)
1.	9.5	11.0	6.0	16.1	ri				11.2	18.0	24.7
2.	7.2	10.2	6.9	3.8	ri				7.5	12.4	18.5
3.	7.8	9.0	4.2	0.5	ri				6.4	10.8	14.9
4.	7.2	9.3	6.6	16.5	ri				2.2	5.7	6.7
5.	6.5	8.5	4.8	24.7	ri				4.3	9.8	12.4
6.	5.1	8.2	3.1	10.9	ri				8.3	17.5	21.1
7.	6.3	9.9	4.6						2.1	3.6	4.6
8.	6.4	9.8	2.9						4.4	8.2	11.3
9.	6.5	9.2	5.2	3.4	ri				6.9	12.9	20.1
10.	8.8	10.5	5.8	5.9	ri				8.1	16.5	22.7
11.	7.9	9.8	5.0	1.9	ri				6.6	19.0	27.8
12.	10.1	11.1	7.4	7.8	ri				14.1	20.6	28.8
13.	7.8	11.0	7.4	7.5	ri				8.3	16.0	21.1
14.	7.0	8.6	6.3	3.8	ri				9.3	12.4	17.0
15.	2.8	8.3	1.9	3.9	ri				12.0	14.9	19.0
16.	1.2	3.1	0.4						8.8	11.3	14.9
17.	2.7	5.8	-3.0						6.4	12.9	17.5
18.	8.9	10.3	5.2	0.8	ri				13.5	20.1	27.3
19.	9.6	12.6	8.8	16.1	ri				6.7	10.8	15.4
20.	8.4	13.4	7.1	0.4	ri				9.1	14.4	21.1
21.	5.5	8.5	5.0	6.4	ri				3.6	9.8	12.9
22.	7.3	10.2	3.6	1.6	ri				10.2	23.2	31.4
23.	6.4	10.5	3.4	27.4	ri				12.2	17.0	25.7
24.	6.8	7.5	3.4	6.0	sl				11.7	18.0	25.2
25.	6.7	10.2	4.3	26.5	sl				11.9	17.0	23.2
26.	3.4	5.5	1.2	3.6	sl				10.9	17.0	23.2
27.	3.1	5.2	1.4	5.5	sl				5.3	16.0	20.1
28.	0.2	3.5	-1.7	7.9	sn	6	4		1.4	5.1	6.2
29.	-0.5	3.8	-2.5	6.4	sn	16	4		3.1	7.2	9.8
30.	3.5	7.1	-3.2	2.1	sl	7	4		11.0	20.1	26.3
31.	2.0	8.7	0.9	15.3	ri				8.5	19.6	25.2



Meðalhiti	=	5.9 °C
Frávik frá meðaltali 1961-90	=	1.3 °C
Meðalhámarkshiti	=	8.7 °C
Meðallágmarkshiti	=	3.6 °C
Úrkomumagn	=	232.7 mm
Hlutfall úrkomu af meðaltali 1961-90	=	201.8 %
Meðalvindhraði	=	7.9 m/s