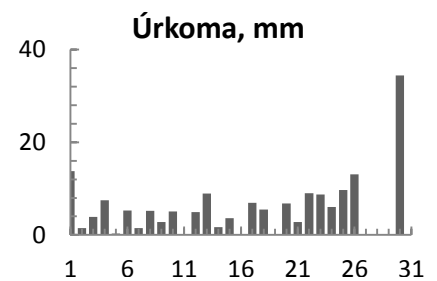
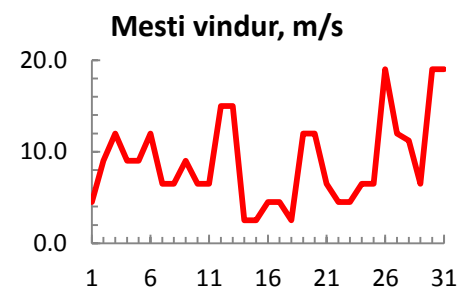
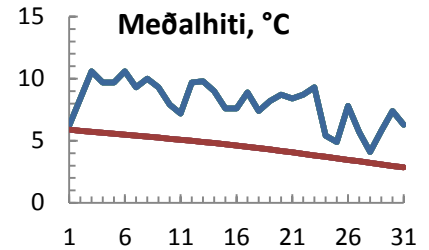


dagur	meðalhiti (°C)	Hámark (°C)	Lágmark (°C)	Úrkoma (mm)	Úrkomutegund	Snjódýpt (cm)	Snjóhula (0-4)	Sólskin (klst)	Meðalvindur (m/s)	Mesti vindur (m/s)	Hviða (m/s)
1	6.2	8.6	4.4	13.8	ri	0	0		2.8	4.5	
2	8.4	11.4	4.4	1.5	ri	0	0		4.6	9.0	
3	10.6	12.5	8.9	3.9	ri	0	0		7.6	12.0	
4	9.7	11.0	8.7	7.5	ri	0	0		6.6	9.0	
5	9.7	10.6	7.7	0.3	ri	0	0		5.6	9.0	
6	10.6	11.2	10.2	5.3	ri	0	0		8.3	12.0	
7	9.3	10.8	8.9	1.5	ri	0	0		5.2	6.5	
8	10.0	11.2	7.9	5.2	ri	0	0		5.0	6.5	
9	9.3	10.6	8.5	2.8	ri	0	0		4.9	9.0	
10	7.9	9.5	7.5	5.1	ri	0	0		4.7	6.5	
11	7.2	8.6	4.7	0.1	ri	0	0		2.6	6.5	
12	9.7	10.2	8.5	4.9	ri	0	0		7.4	15.0	
13	9.8	10.4	9.7	8.9	ri	0	0		8.1	15.0	
14	9.0	11.0	8.2	1.7	ri	0	0		1.6	2.5	
15	7.6	9.0	5.9	3.6	ri	0	0		1.7	2.5	
16	7.6	8.0	5.4	0.1	ri	0	0		3.2	4.5	
17	8.9	10.4	7.5	6.9	ri	0	0		3.1	4.5	
18	7.4	11.4	3.9	5.5	ri	0	0		1.4	2.5	
19	8.2	9.4	5.4	0.1	ri	0	0		5.9	12.0	
20	8.7	10.0	7.9	6.8	ri	0	0		6.4	12.0	
21	8.4	10.0	5.5	2.8	ri	0	0		3.6	6.5	
22	8.7	10.0	6.7	9.0	ri	0	0		2.3	4.5	
23	9.3	9.6	8.9	8.7	ri	0	0		4.0	4.5	
24	5.4	9.4	5.3	6.0	ri	0	0		2.8	6.5	
25	4.9	9.0	0.9	9.7	ri	0	0		3.9	6.5	
26	7.8	9.8	7.3	13.1	ri	0	0		12.0	19.0	
27	5.7	7.6	4.9			0	0		9.0	12.0	
28	4.1	6.5	3.3			0	0		4.8	11.2	
29	5.8	9.2	0.9	0.1	sl	0	0		3.8	6.5	
30	7.4	9.2	6.9	34.4	sl	0	0		12.1	19.0	
31	6.3	7.4	5.9			0	0		9.8	19.0	



Meðalhiti (°C)	8.1
Frávik frá meðaltali 1961 - 1990 (°C)	3.6
Meðalhámarkshiti (°C)	9.8
Meðallágmarkshiti (°C)	6.5
Úrkomumagn (mm)	169.3
Hlutfall úrkomu af meðaltali 1961-1990 (%)	107.5
Meðalvindhraði (m/s)	5.3