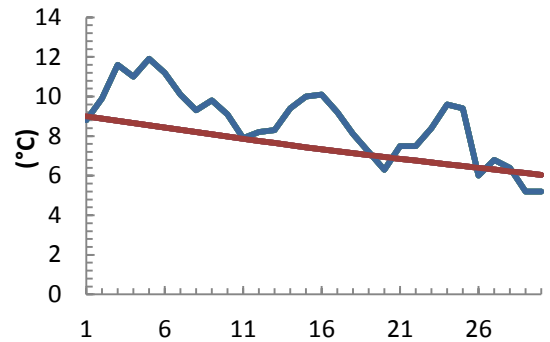
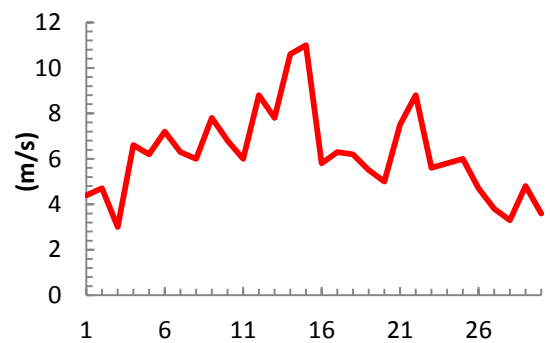
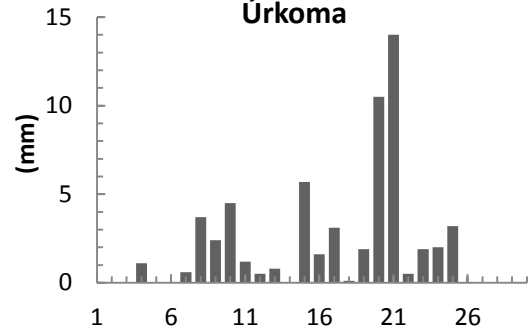


dagur	meðalhiti (°C)	Hámark (°C)	Lágmark (°C)	Úrkoma (mm)	Úrkomutegund	Snjódýpt (cm)	Snjóhúla (0-4)	Sólskin (klst)	Meðalvindur (m/s)	Mesti vindur (m/s)	Hviða (m/s)
1	8.8	14.1	2.4	0		0	0	12	2.5	4.4	7.4
2	9.9	13.7	5.1			0	0	11.7	2.1	4.7	8.1
3	11.6	14.1	9.5	0		0	0	0.8	1.3	3	4.7
4	11	14.9	9.1	1.1	ri	0	0	5.2	2.8	6.6	10.8
5	11.9	17.4	6.4			0	0	7.5	3.3	6.2	11.6
6	11.2	14.5	9.3	0		0	0	11.1	3.7	7.2	12.4
7	10.1	13.2	7.6	0.6	ri	0	0	1.2	3.2	6.3	10.8
8	9.3	12	7.8	3.7	ri	0	0	0	3.1	6	10
9	9.8	11.9	7	2.4	ri	0	0	2.7	4.5	7.8	13.3
10	9.1	11.9	7.6	4.5	ri	0	0	0.3	3.2	6.8	12.7
11	7.9	10.1	6.7	1.2	ri	0	0	0	1.5	6	10.1
12	8.2	10.7	6.7	0.5	ri	0	0	3	6	8.8	14.5
13	8.3	11.4	7.2	0.8	ri	0	0	5.6	4.7	7.8	15.7
14	9.4	11.8	4	0		0	0	0	6.1	10.6	18.2
15	10	11.6	9.5	5.7	ri	0	0	0	4.9	11	18.6
16	10.1	12	8.6	1.6	ri	0	0	0.3	3.5	5.8	9.5
17	9.2	11.2	8.1	3.1	ri	0	0	1	3.3	6.3	10.6
18	8.1	11.3	5.4	0.1	ri	0	0	4.6	3.5	6.2	11.6
19	7.2	11.2	5.4	1.9	ri	0	0	6.1	2.6	5.5	11.6
20	6.3	9.1	5.7	10.5	ri	0	0	0.5	2.8	5	9
21	7.5	10.2	5.4	14	ri	0	0	3.1	4.1	7.5	14.5
22	7.5	10	5.9	0.5	ri	0	0	0	4.2	8.8	15.3
23	8.4	11	5.9	1.9	ri	0	0	6.8	2.6	5.6	9.4
24	9.6	13.2	7.3	2	ri	0	0	0.8	3.8	5.8	10.8
25	9.4	13.4	8.8	3.2	ri	0	0	4.7	2.5	6	10.8
26	6	10.9	2.4	0		0	0	11	1.6	4.7	8.3
27	6.8	11.1	2.5			0	0	9.3	2.2	3.8	5.4
28	6.4	11.6	3			0	0	10.2	1.8	3.3	5.2
29	5.2	9.8	2.8			0	0	7	2.1	4.8	9.3
30	5.2	10.7	1.2			0	0	8.5	1.7	3.6	5.9

Meðalhiti (°C)	8.7
Frávik frá meðaltali 1961 - 1990 (°C)	1.3
Meðalhámarkshiti (°C)	12.0
Meðallágmarkshiti (°C)	6.1
Úrkomumagn (mm)	59.3
Hlutfall úrkomu af meðaltali 1961-1990 (%)	89.0
Meðalvindhraði (m/s)	3.2
Sólskinsstundir (klst)	135.0

Meðalhiti

Mesti vindur

Úrkoma

Sólskin
