
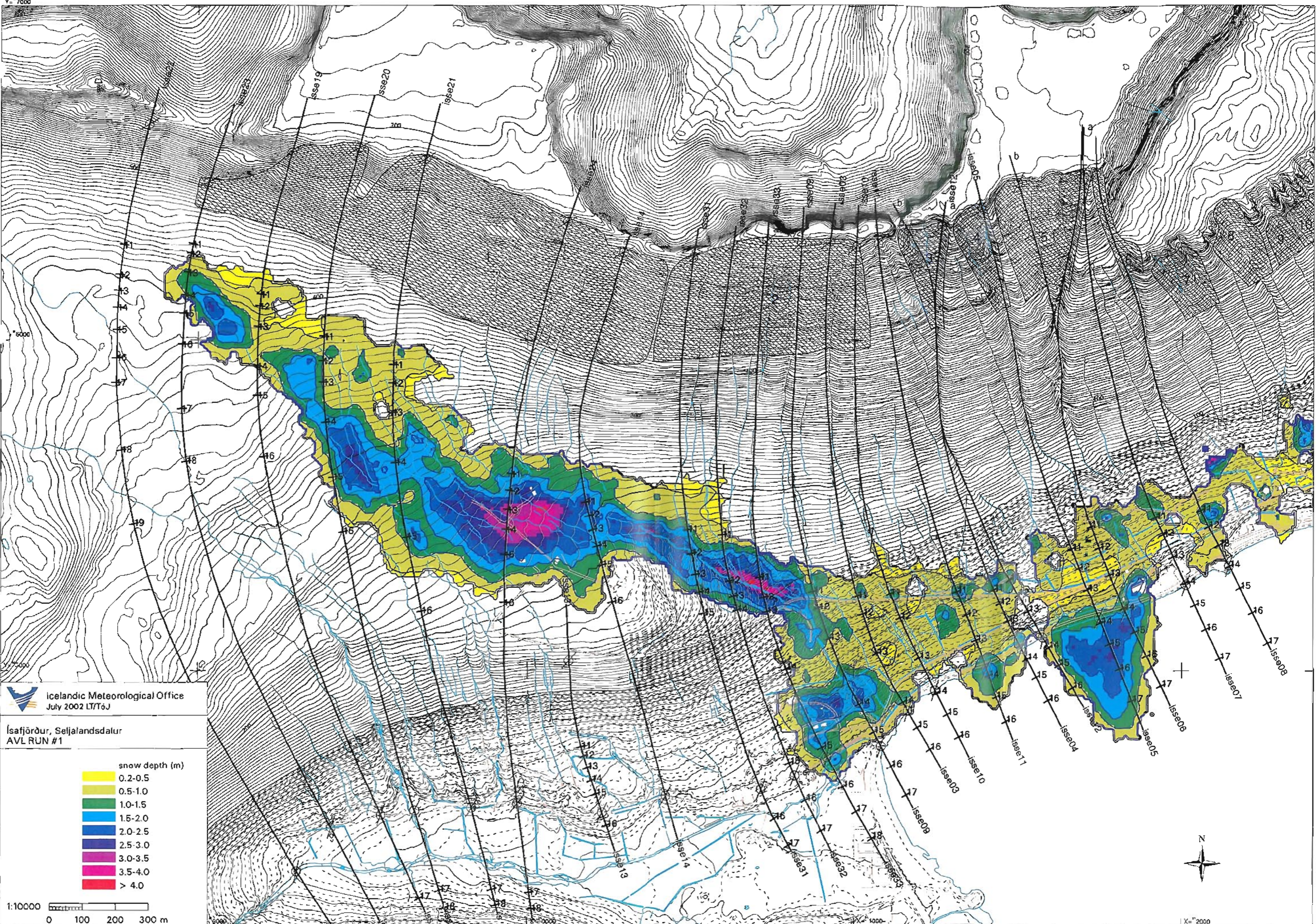
 Icelandic Meteorological Office  
July 2002

Ísafjörður, Hnífsdalur  
Location Map

1:25000   
0 200 400 600 m

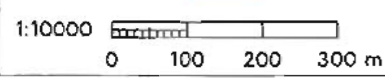




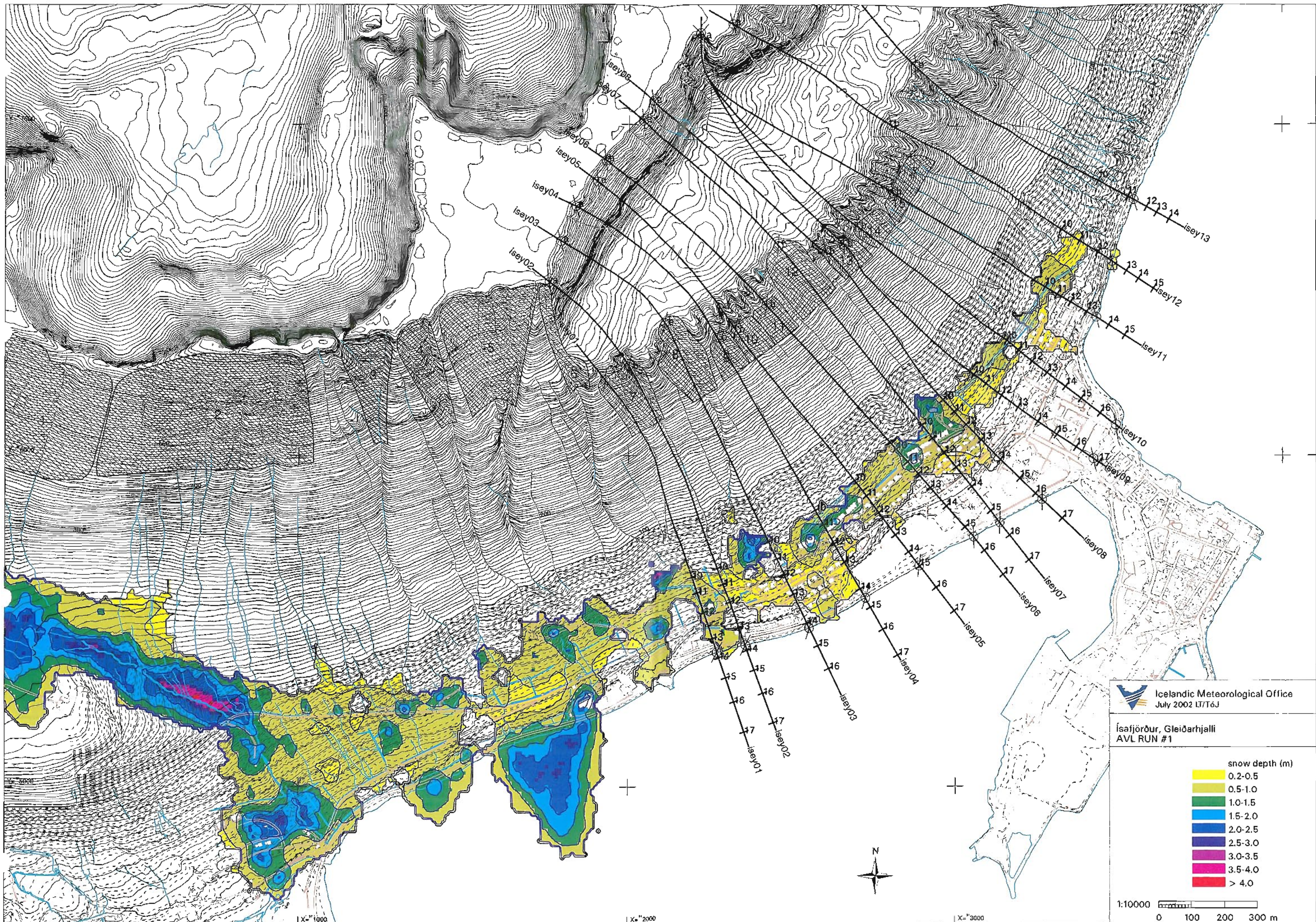
 Icelandic Meteorological Office  
July 2002 LT/TóJ

Isafjörður, Seljalandsdalur  
AVL RUN #1

snow depth (m)	
	0.2-0.5
	0.5-1.0
	1.0-1.5
	1.5-2.0
	2.0-2.5
	2.5-3.0
	3.0-3.5
	3.5-4.0
	> 4.0







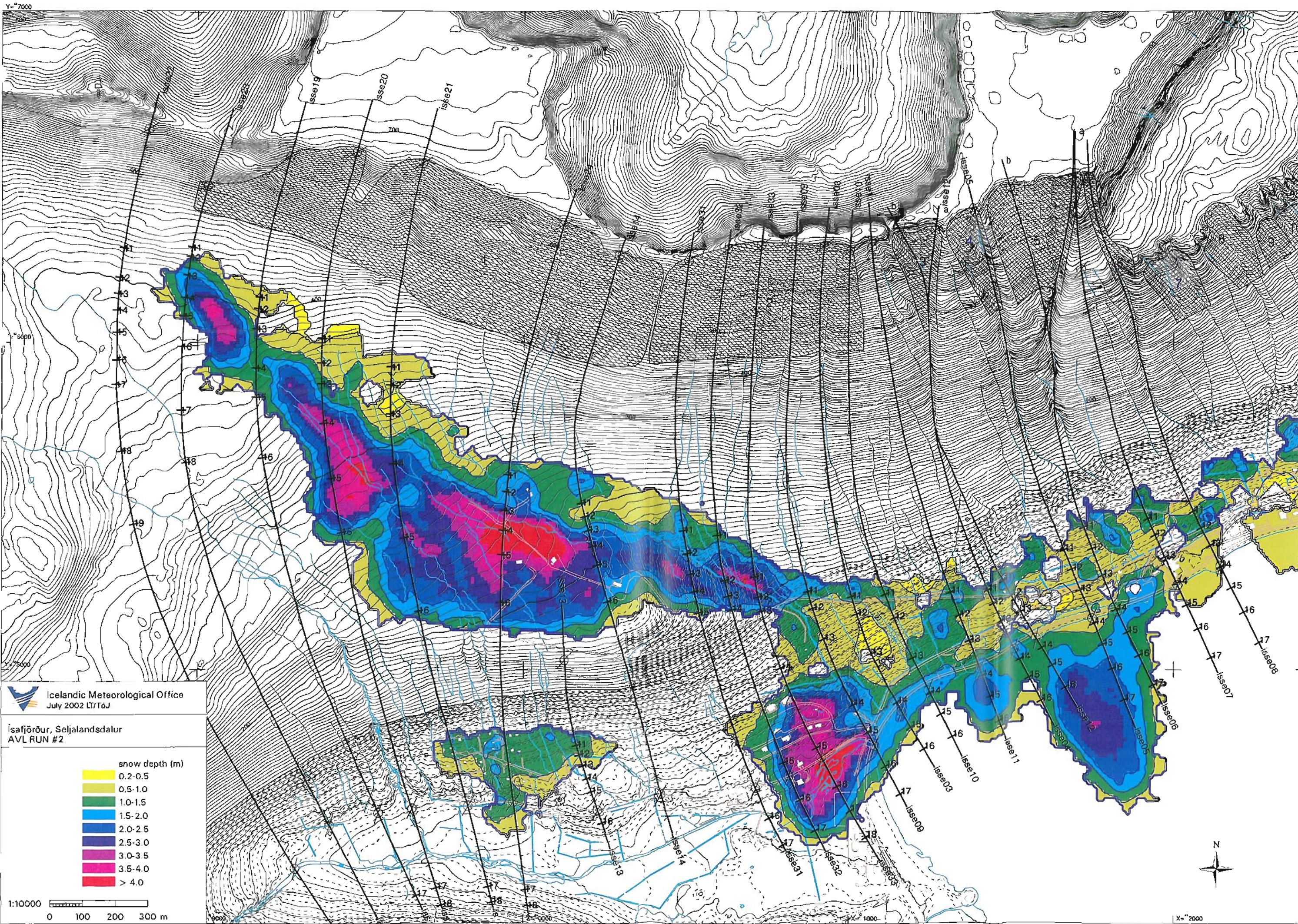
Icelandic Meteorological Office  
July 2002 L7/T6J

Ísafjörður, Gleiðarhjalli  
AVL RUN #1

snow depth (m)	
0.2-0.5	Yellow
0.5-1.0	Light Green
1.0-1.5	Green
1.5-2.0	Blue
2.0-2.5	Dark Blue
2.5-3.0	Purple
3.0-3.5	Magenta
3.5-4.0	Red
> 4.0	Dark Red

1:10000  
0 100 200 300 m





Icelandic Meteorological Office  
July 2002 LT/T6J

Ísafjörður, Seljalandsdalur  
AVL RUN #2

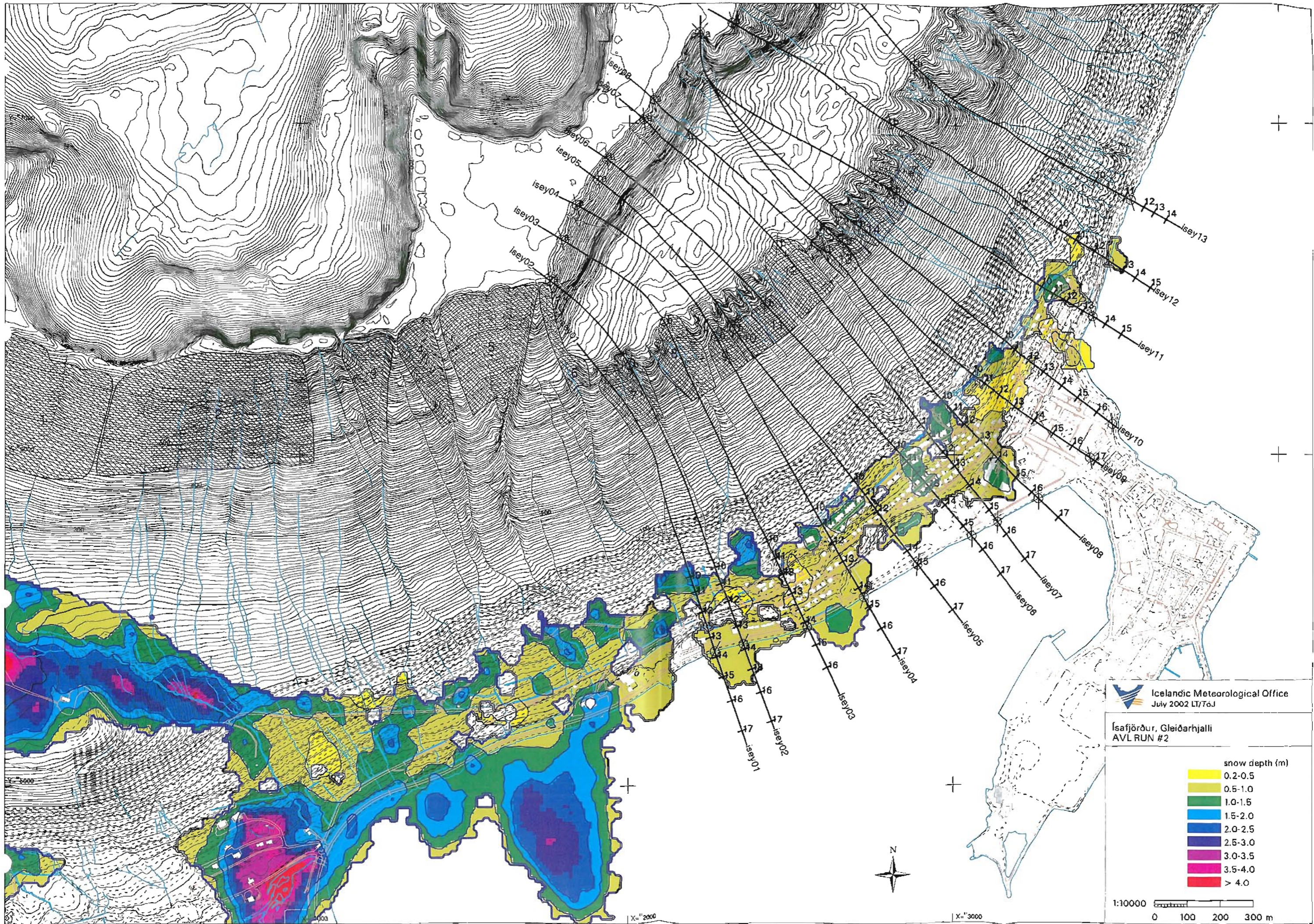
snow depth (m)	
Yellow	0.2-0.5
Light Green	0.5-1.0
Green	1.0-1.5
Blue	1.5-2.0
Dark Blue	2.0-2.5
Purple	2.5-3.0
Magenta	3.0-3.5
Pink	3.5-4.0
Red	> 4.0

1:10000  
0 100 200 300 m



X=7000





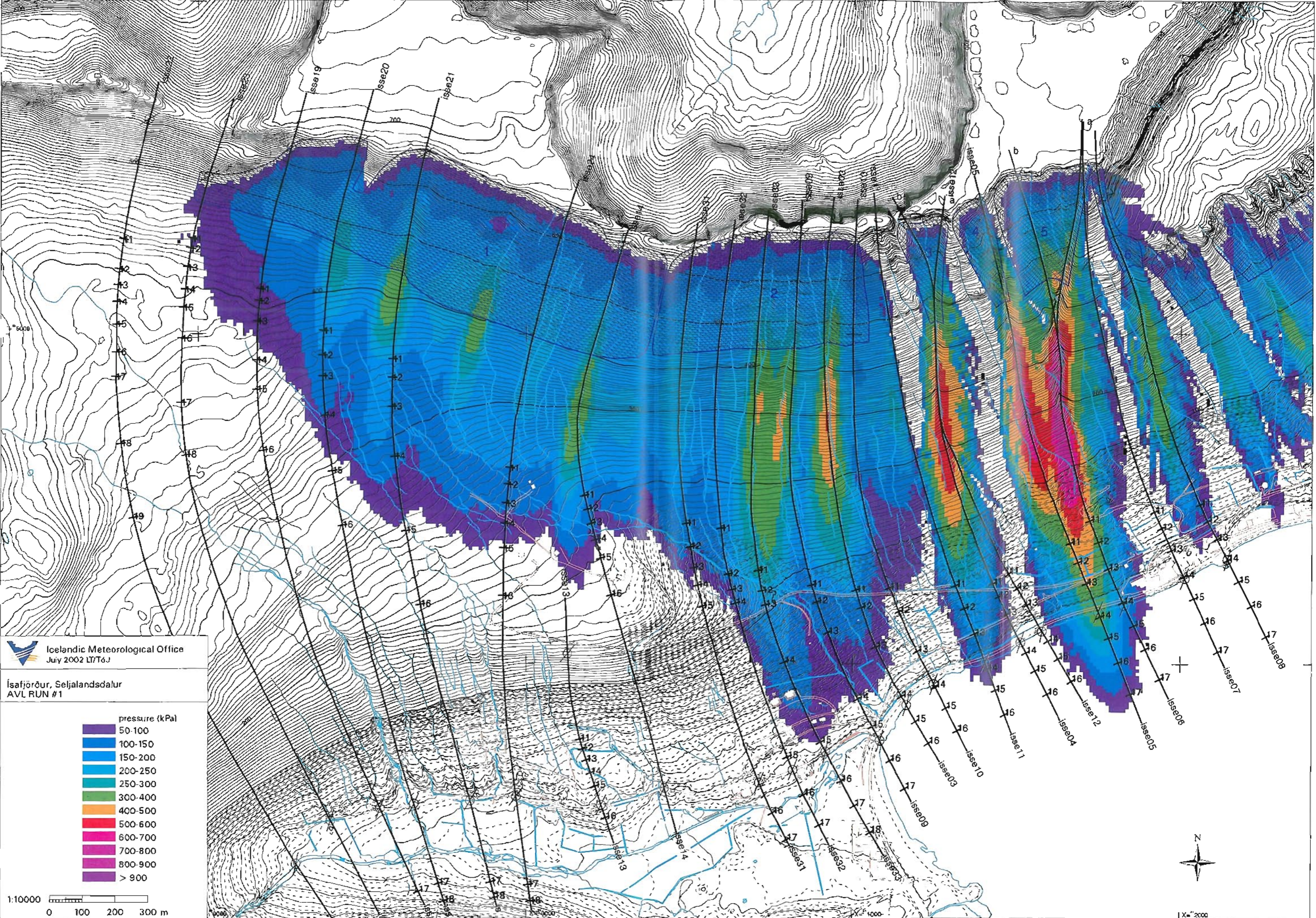
Icelandic Meteorological Office  
 July 2002 LT/T6J

Ísafjörður, Gleiðarhjalli  
 AVL RUN #2

snow depth (m)	
0.2-0.5	Yellow
0.5-1.0	Light Green
1.0-1.5	Green
1.5-2.0	Blue
2.0-2.5	Dark Blue
2.5-3.0	Purple
3.0-3.5	Magenta
3.5-4.0	Pink
> 4.0	Red

1:10000  
 0 100 200 300 m

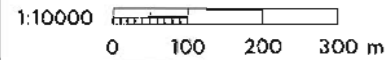




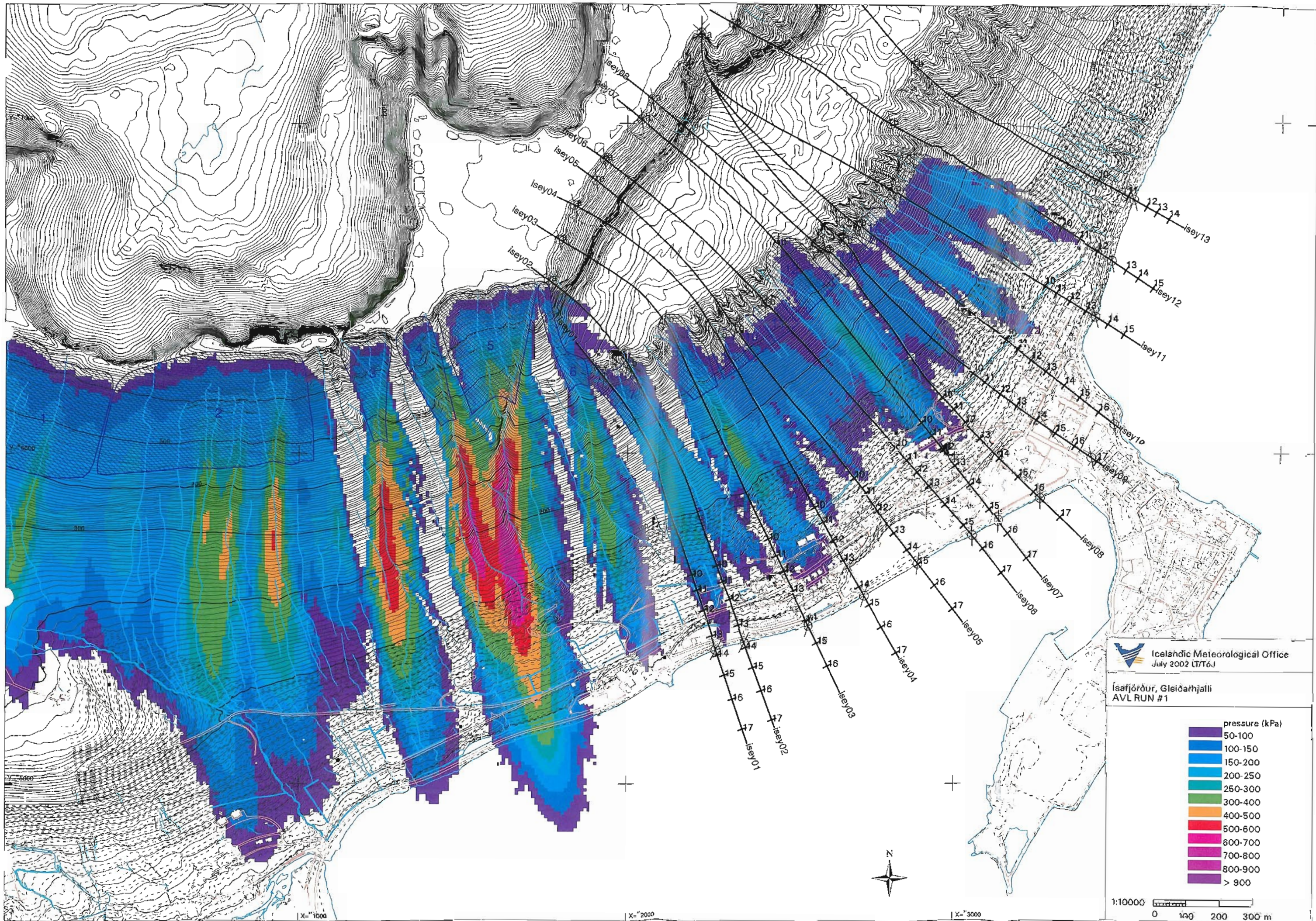
Icelandic Meteorological Office  
 July 2002 LT/T6.J

Ísafjörður, Seljalandsdalur  
 AVL RUN #1

pressure (kPa)
50-100
100-150
150-200
200-250
250-300
300-400
400-500
500-600
600-700
700-800
800-900
> 900







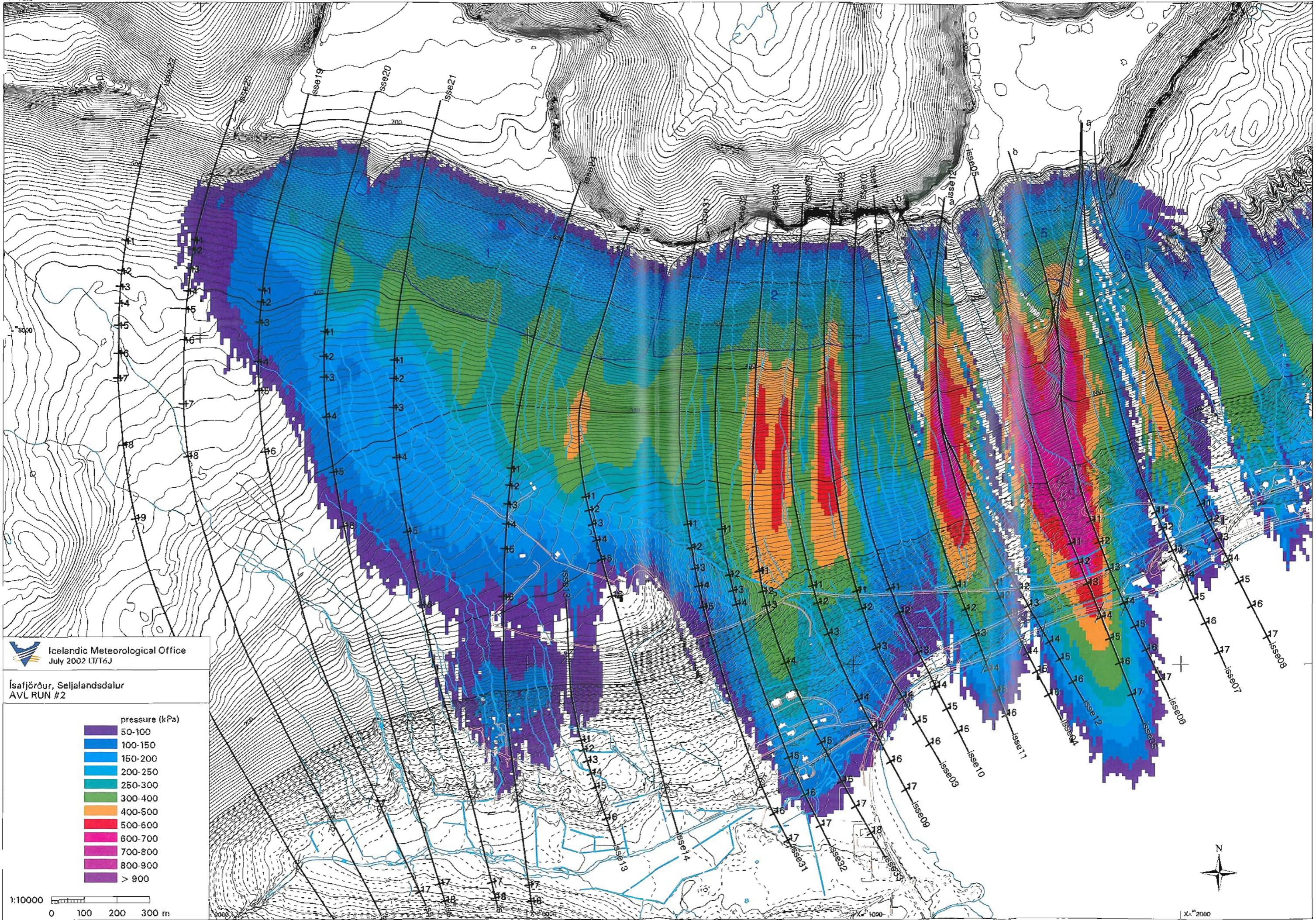
Icelandic Meteorological Office  
July 2002 LT/T6.J

Isafjörður, Gleiðarhjalli  
AVL RUN #1

- pressure (kPa)
- 50-100
  - 100-150
  - 150-200
  - 200-250
  - 250-300
  - 300-400
  - 400-500
  - 500-600
  - 600-700
  - 700-800
  - 800-900
  - > 900

1:10000  
0 100 200 300 m





Icelandic Meteorological Office  
July 2002 (T/T6J)

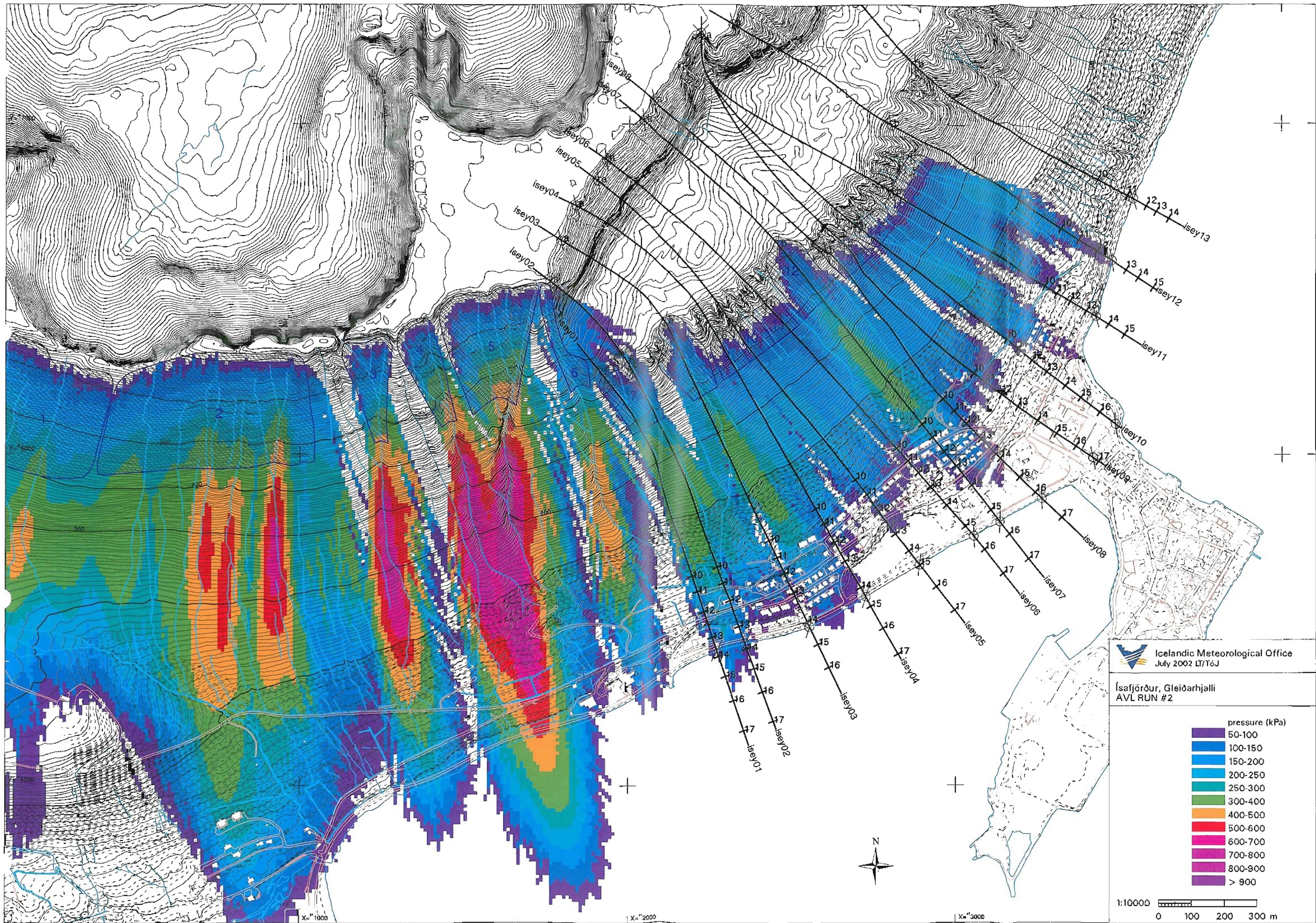
Ísafjörður, Seljalandsdalur  
AVL RUN #2

- pressure (kPa)
- 50-100
  - 100-150
  - 150-200
  - 200-250
  - 250-300
  - 300-400
  - 400-500
  - 500-600
  - 600-700
  - 700-800
  - 800-900
  - > 900

1:10000  
0 100 200 300 m







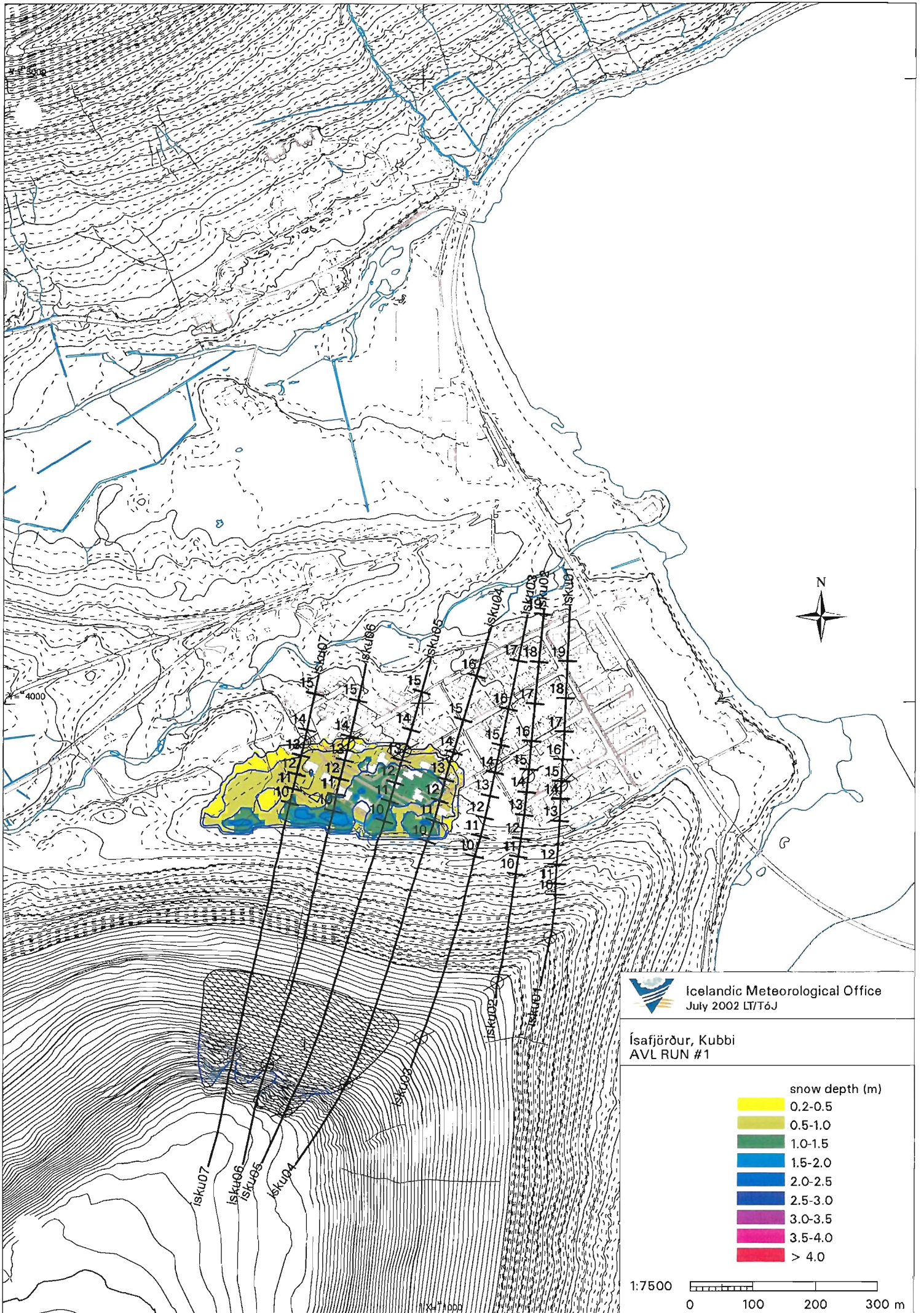
Icelandic Meteorological Office  
 July 2002 LT/T&J

Ísafjörður, Gleidarhjálli  
 AVL RUN #2

pressure (kPa)	
50-100	100-150
150-200	200-250
250-300	300-400
400-500	500-600
600-700	700-800
800-900	> 900

1:10000  
 0 100 200 300 m





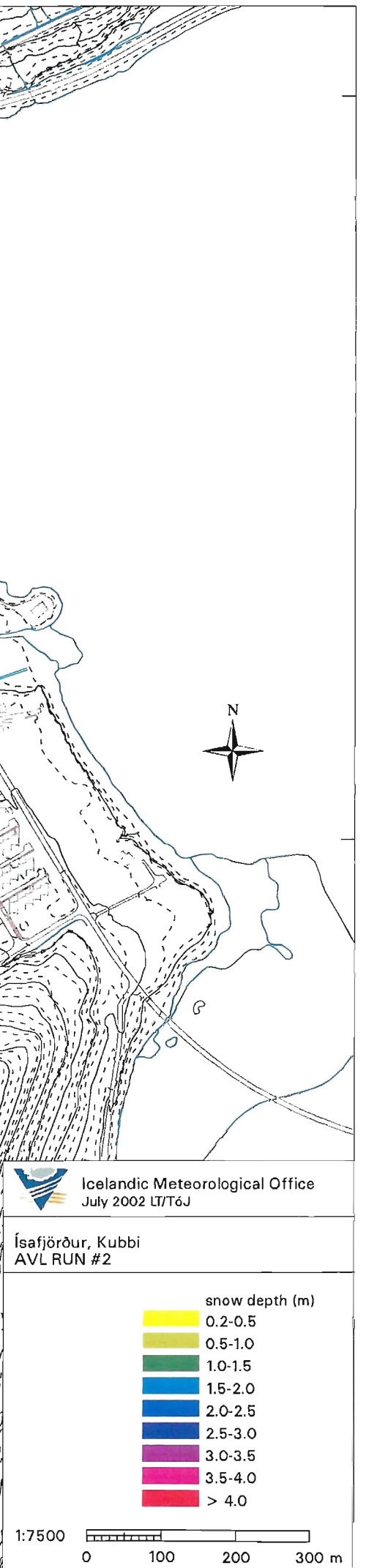
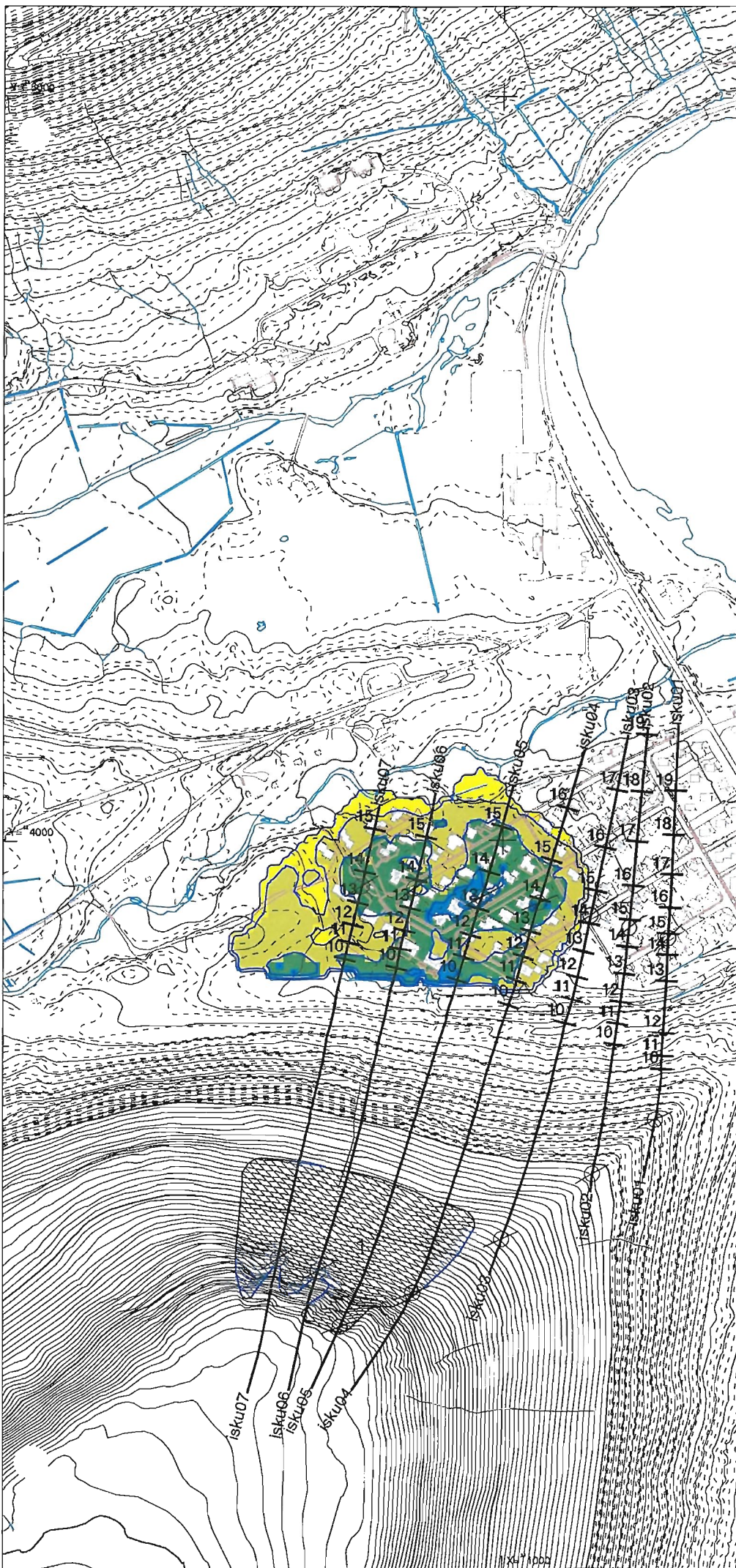
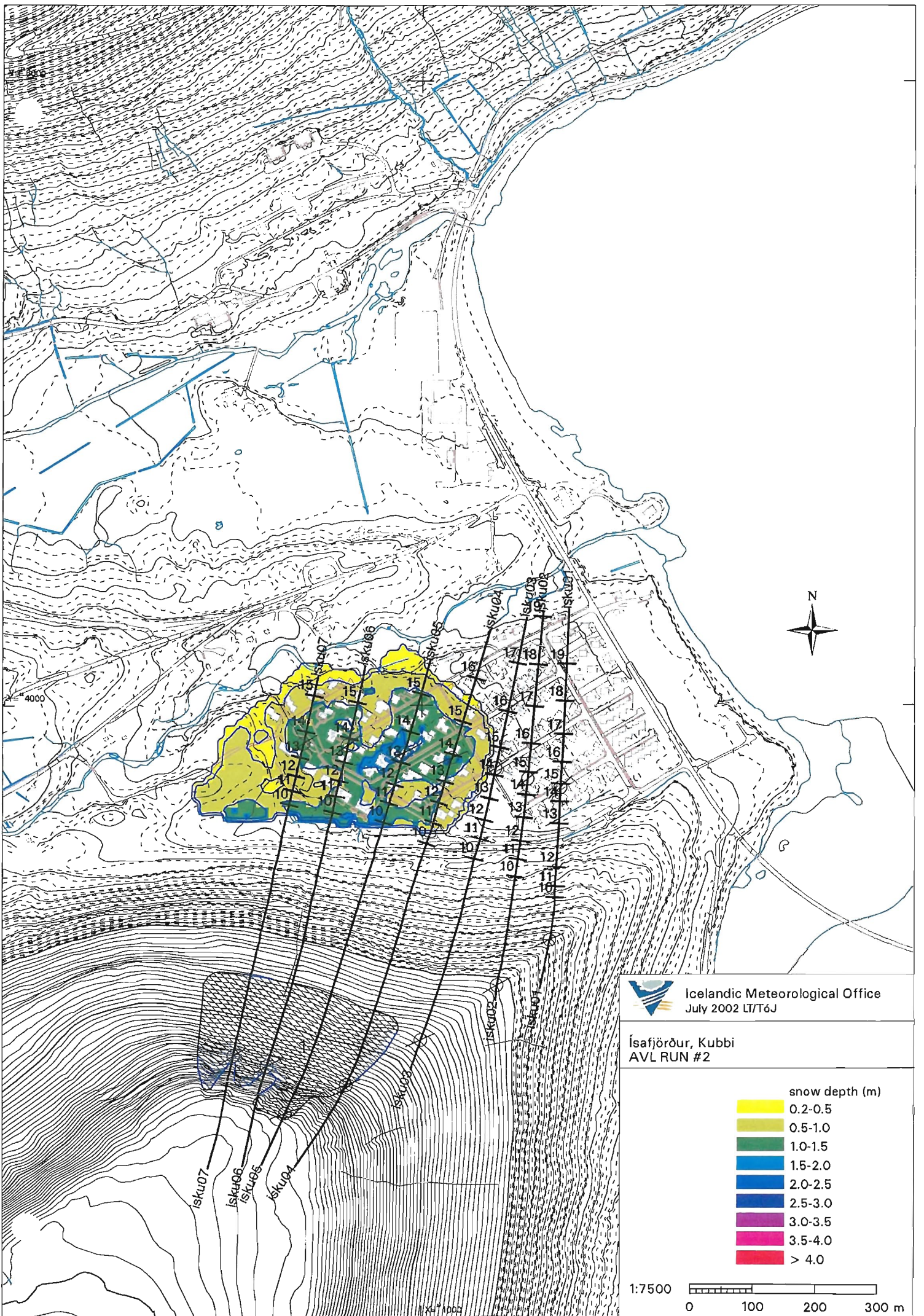
Icelandic Meteorological Office  
July 2002 LT/T6J

Ísafjörður, Kubbi  
AVL RUN #1

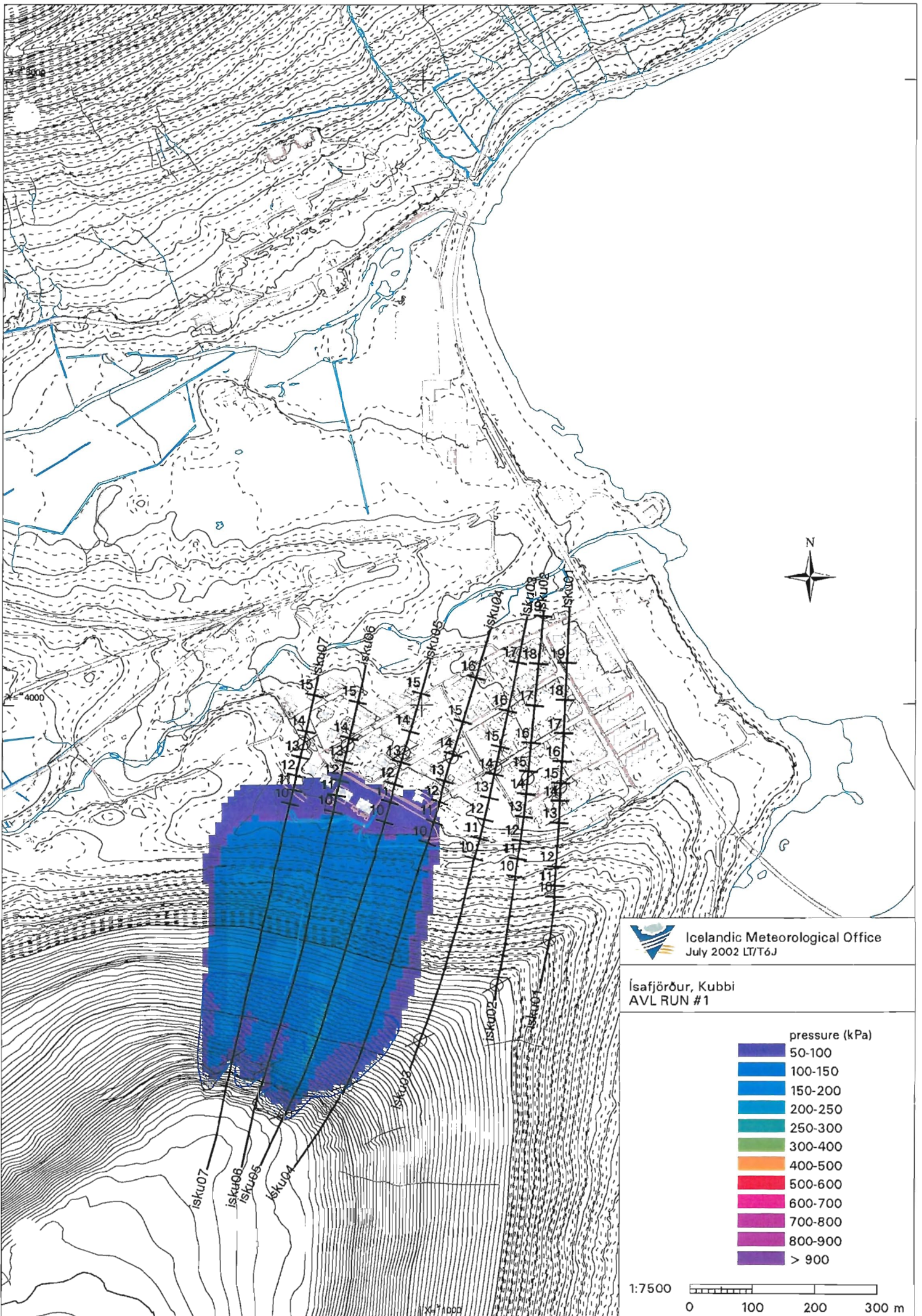
snow depth (m)	
0.2-0.5	Yellow
0.5-1.0	Light Green
1.0-1.5	Green
1.5-2.0	Blue
2.0-2.5	Dark Blue
2.5-3.0	Purple
3.0-3.5	Magenta
3.5-4.0	Pink
> 4.0	Red

1:7500  
0 100 200 300 m









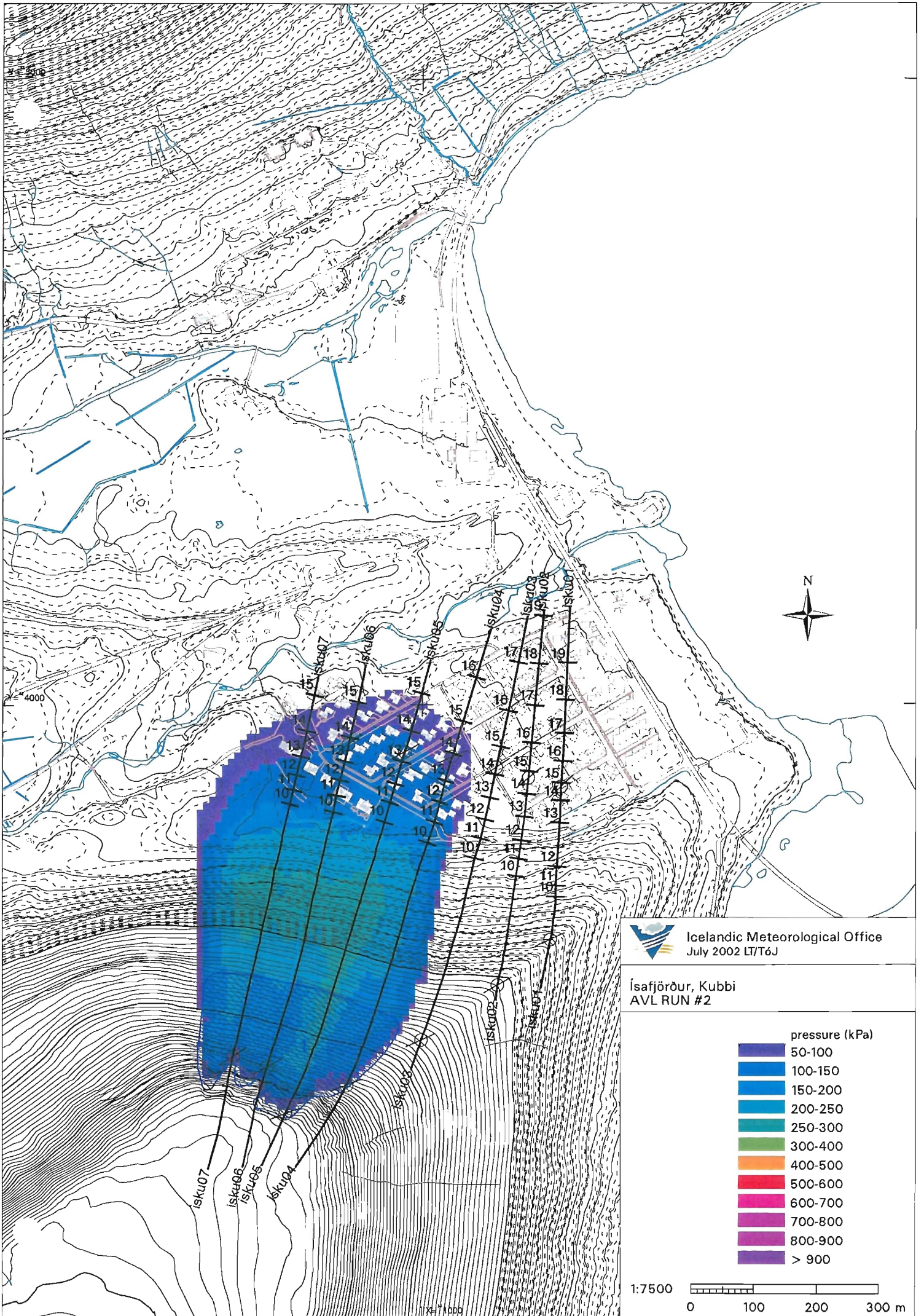
Icelandic Meteorological Office  
July 2002 LT/T6J

Ísafjörður, Kubbi  
AVL RUN #1

pressure (kPa)	
50-100	Dark Blue
100-150	Blue
150-200	Light Blue
200-250	Teal
250-300	Green
300-400	Yellow-Green
400-500	Yellow
500-600	Orange
600-700	Red
700-800	Pink
800-900	Purple
> 900	Dark Purple

1:7500  
0 100 200 300 m





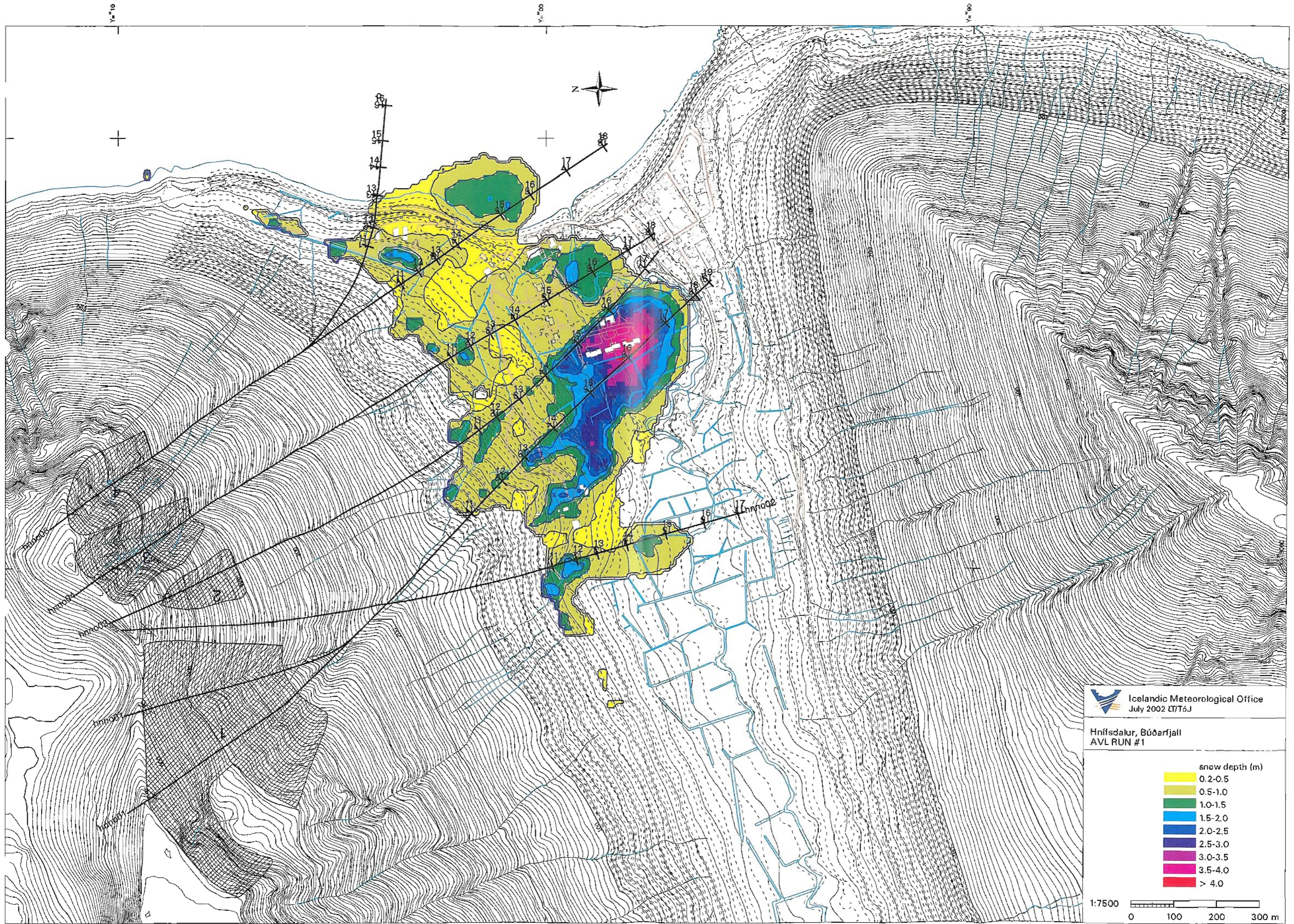
Icelandic Meteorological Office  
 July 2002 LT/T6J

Ísafjörður, Kubbi  
 AVL RUN #2

pressure (kPa)
50-100
100-150
150-200
200-250
250-300
300-400
400-500
500-600
600-700
700-800
800-900
> 900

1:7500  
 0 100 200 300 m



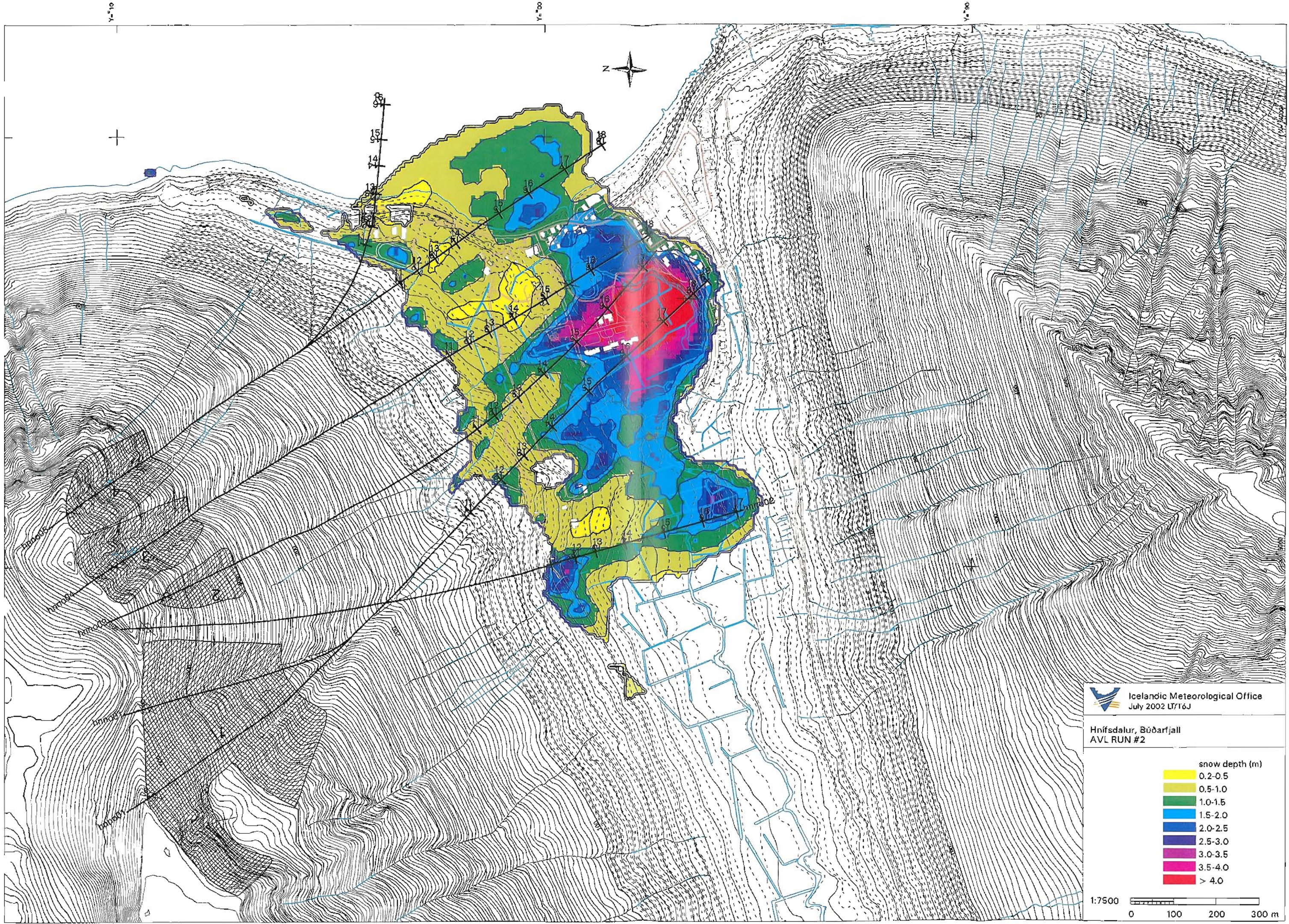


Icelandic Meteorological Office  
July 2002 17/76J

Hnífsdalur, Búðarfjall  
AVL RUN #1

1:7500  
0 100 200 300 m





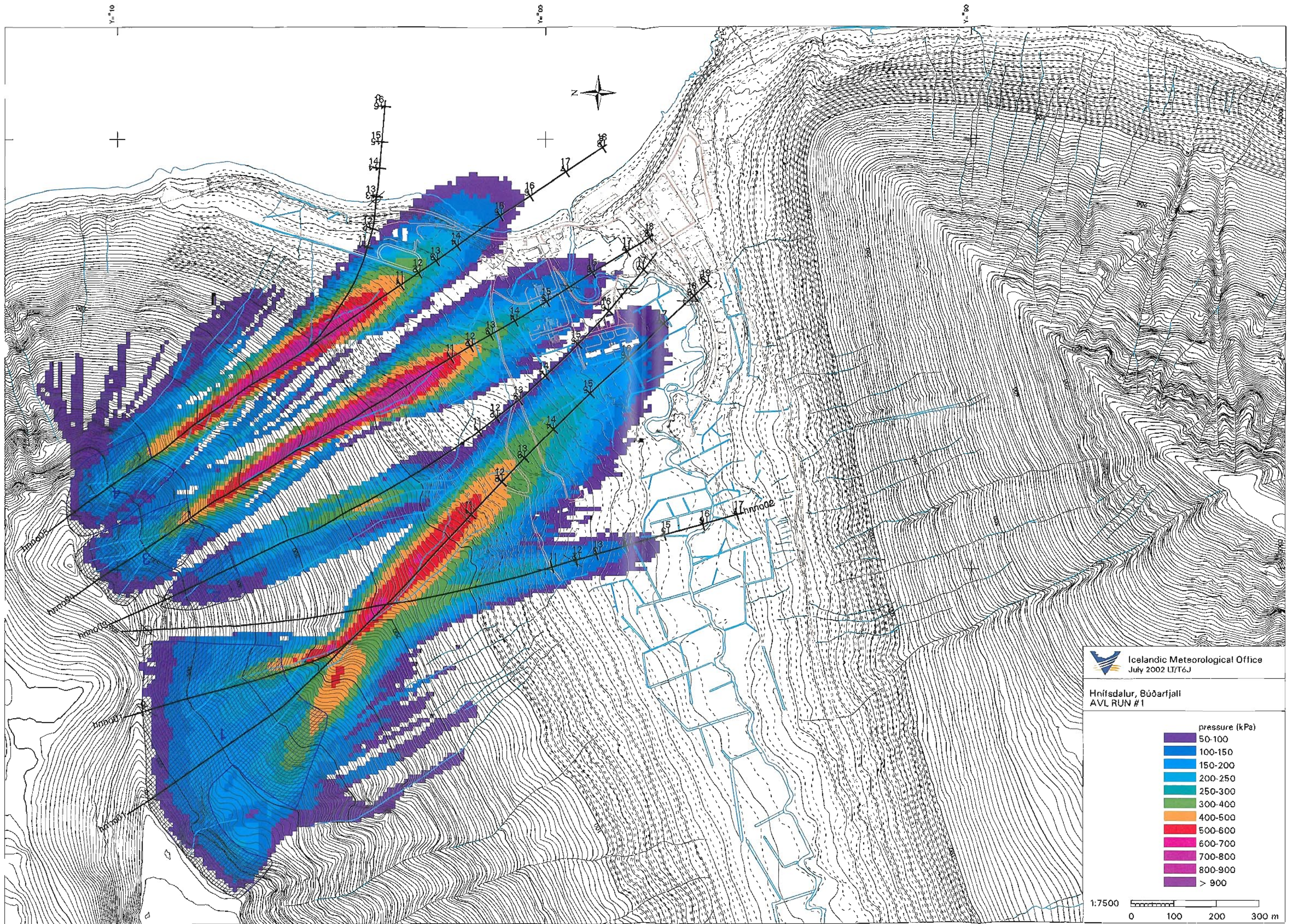
Icelandic Meteorological Office  
July 2002 LT/16J

Hnífsdalur, Büðarfjall  
AVL RUN #2

snow depth (m)	
Yellow	0.2-0.5
Light Green	0.5-1.0
Green	1.0-1.5
Light Blue	1.5-2.0
Blue	2.0-2.5
Dark Blue	2.5-3.0
Purple	3.0-3.5
Magenta	3.5-4.0
Red	> 4.0

1:7500  
0 100 200 300 m





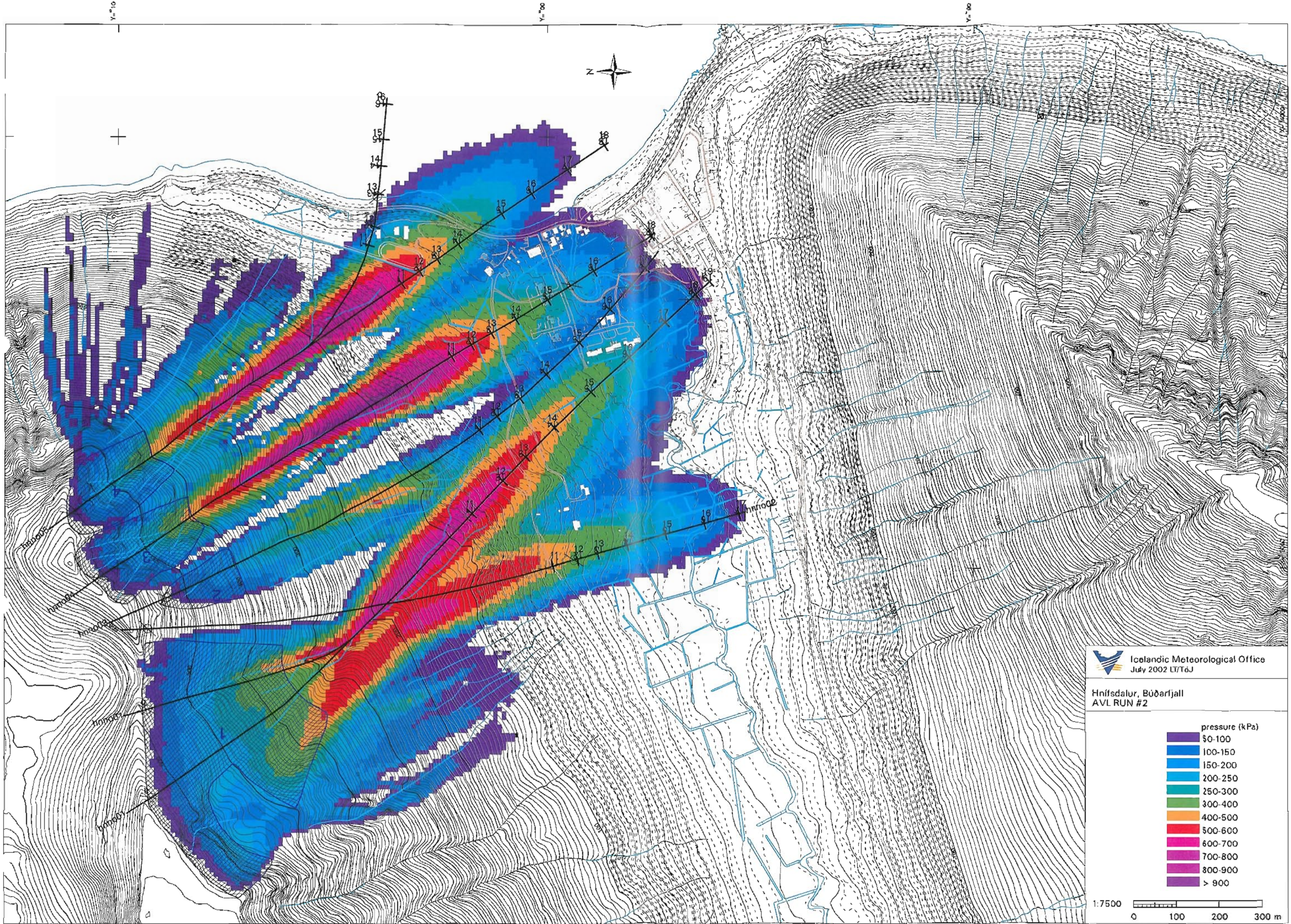
Icelandic Meteorological Office  
July 2002 LT/T6J

Hnífsdalur, Büðarfjall  
AVL RUN #1

pressure (kPa)	
50-100	Dark Purple
100-150	Blue
150-200	Light Blue
200-250	Cyan
250-300	Teal
300-400	Green
400-500	Orange
500-600	Red
600-700	Magenta
700-800	Pink
800-900	Light Purple
> 900	Dark Purple

1:7500  
0 100 200 300 m

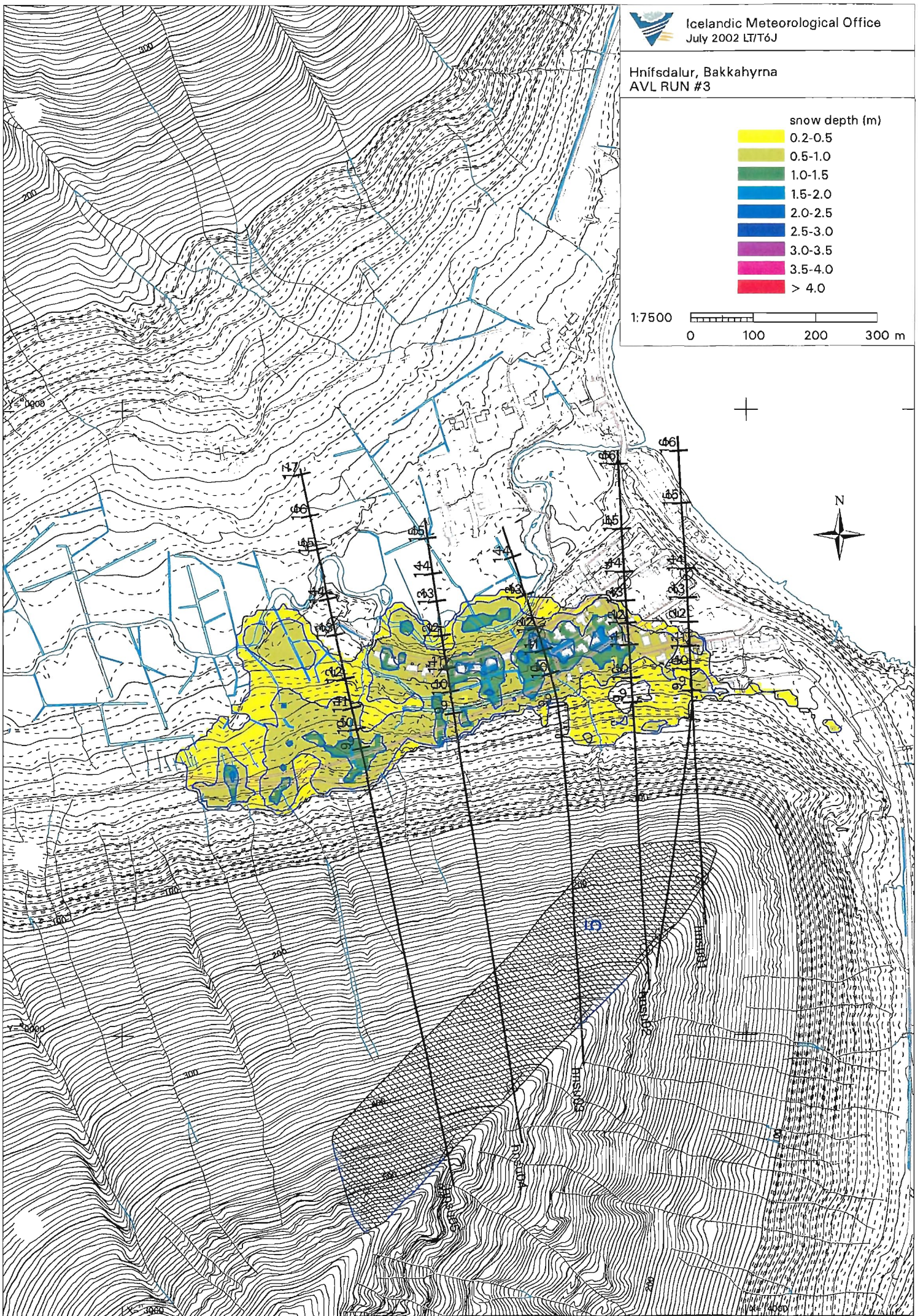
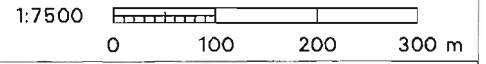
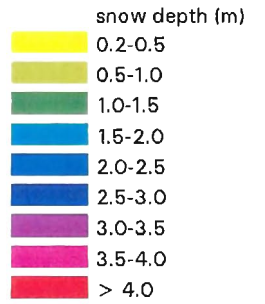








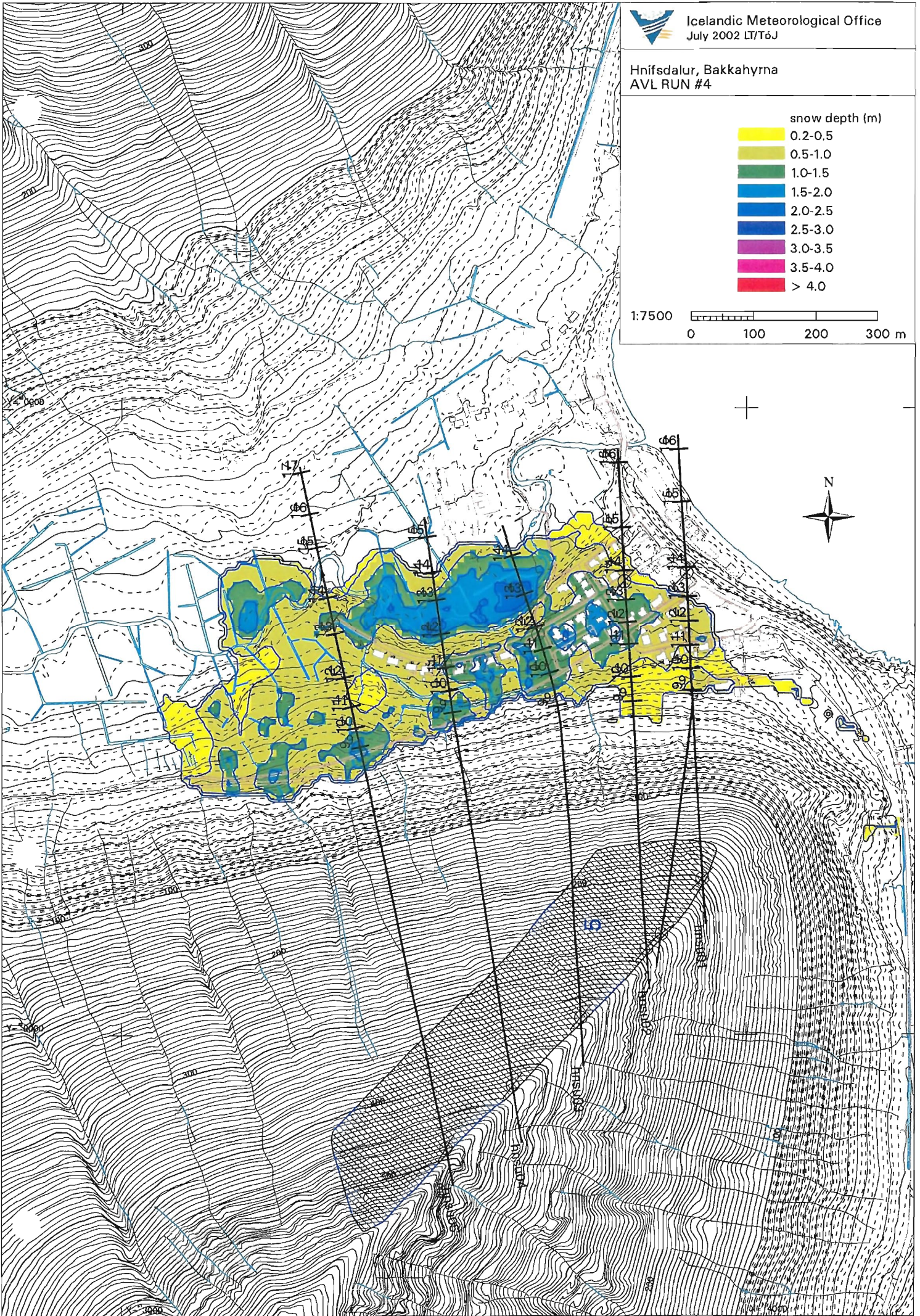
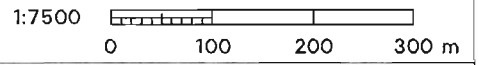
Hnífsdalur, Bakkahyrna  
AVL RUN #3







Hnífsdalur, Bakkahyrna  
AVL RUN #4



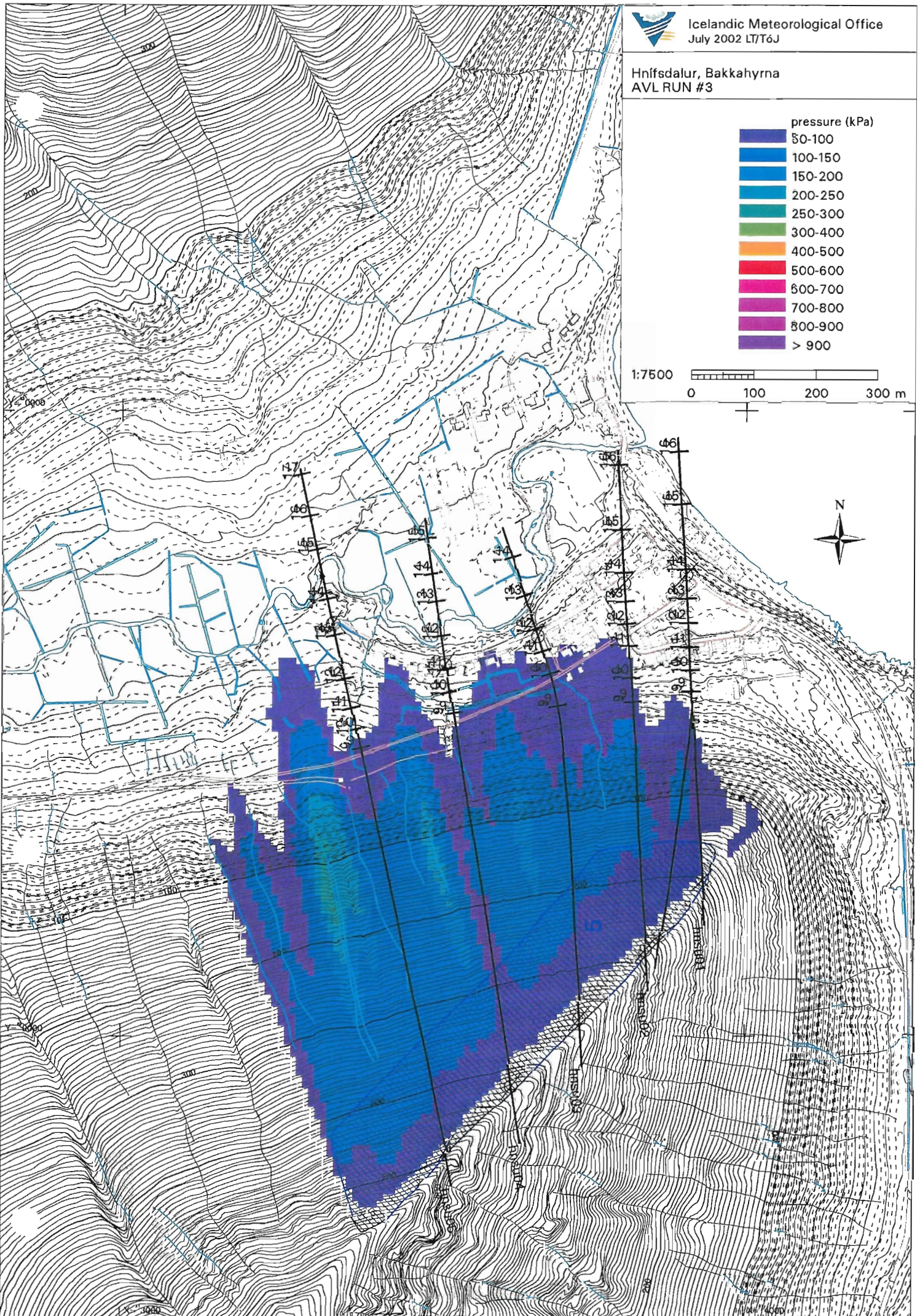
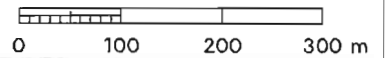




Hnífsdalur, Bakkahyrna  
AVL RUN #3



1:7500







Hnífsdalur, Bakkahyrna  
AVL RUN #4

